

# INTERNATIONAL APARTMENTS FOR THE ELDERLY

## INTERNATIONAL APARTMENTS FOR THE ELDERLY

Dalian University of Technology Press



Edited by HI-DESIGN PUBLISHING  
Dalian University of Technology Press



● ARCHITECT  
Dutch Health  
Architects  
● AREA  
53,770m<sup>2</sup>  
● PHOTOGRAPHER  
Dutch Health  
Architects

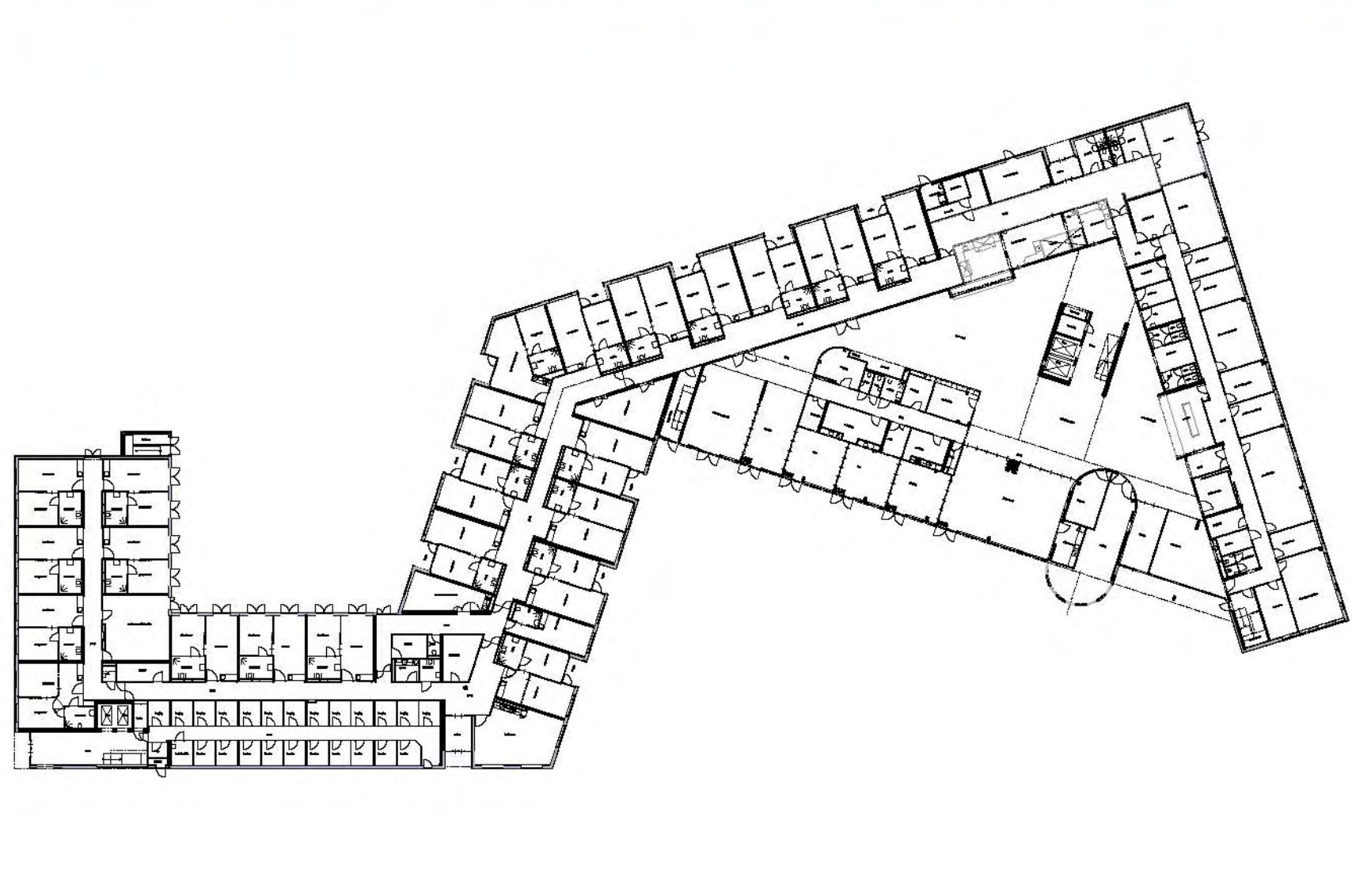
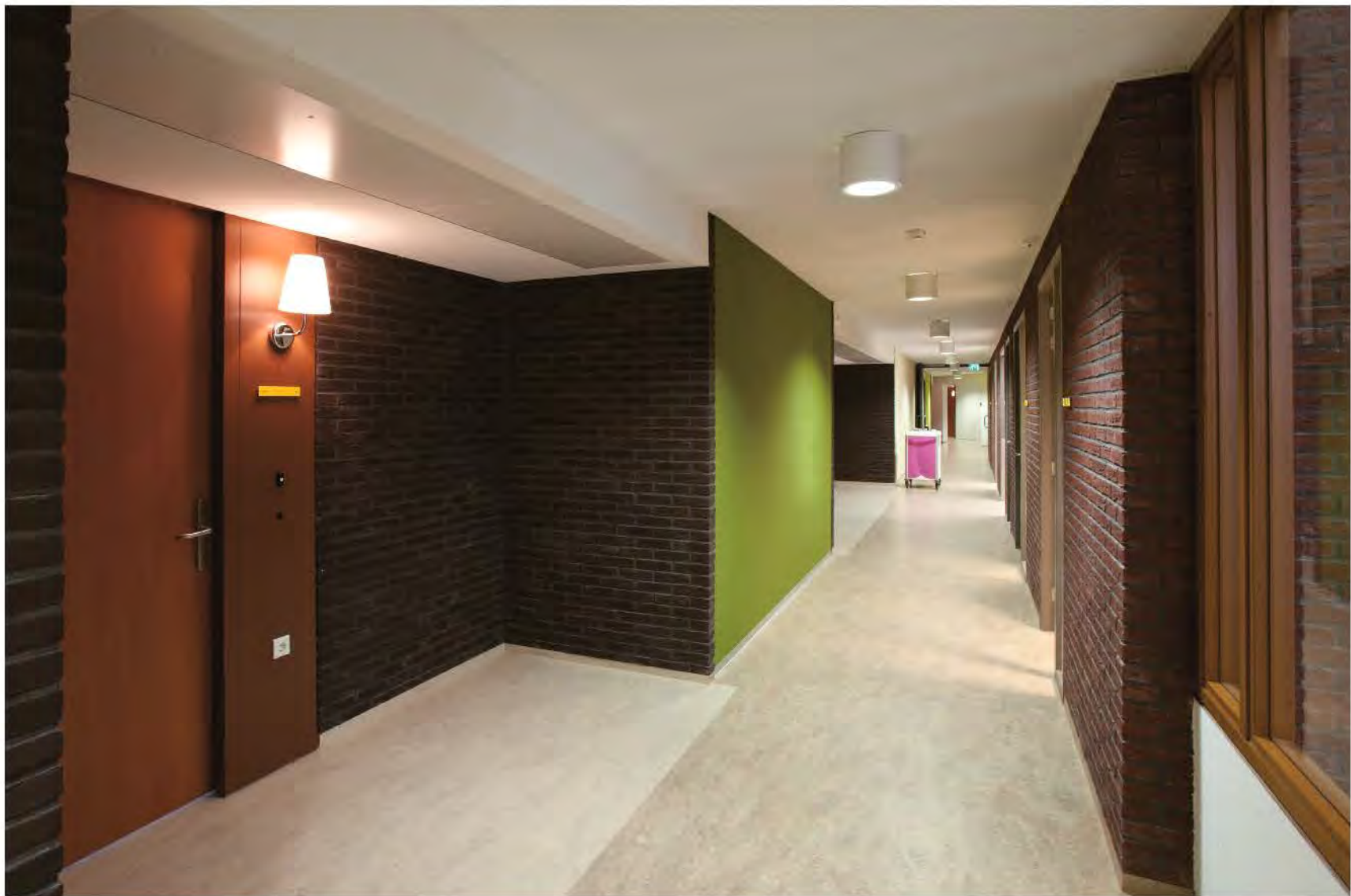
# OOSTERHEEM CARE CENTER

As Oosterheem care center was no longer meeting today's requirements, DHA designed a plan to redevelop the nursing home and the adjoining properties. With the redevelopment of the new building a whole new neighborhood was created simultaneously. The grounds of the old nursing home would slowly make way for a new assisted living center. Three residential buildings and an underground parking garage are now under construction. The construction is phased out, requiring most residents to only "move house" once. The new assisted living center offers sheltered living apartments, care apartments, residential units and general facilities. The design, with four stories and a bent shape, mimicks

the direction and scale of the surrounding neighborhood. The residential buildings are eye-catching and compete with the height and scale of the adjacent Amphia Hospital. DHA based the design on "reversible construction". Meaning that, in future, it would be relatively easy to convert two-bedroom care apartments into intensive care housing or three-bedroom apartments. Because most of the parking is underground, there is room for high quality landscaping. There are plenty of opportunities for residents and neighbors to meet each other. Outside in the garden for example or inside, where the central hall and the general facilities promote further interaction.



















Location: VLAARDINGEN, THE NETHERLANDS

## MARNIX CENTER FOR PREVENTION AND REHABILITATION

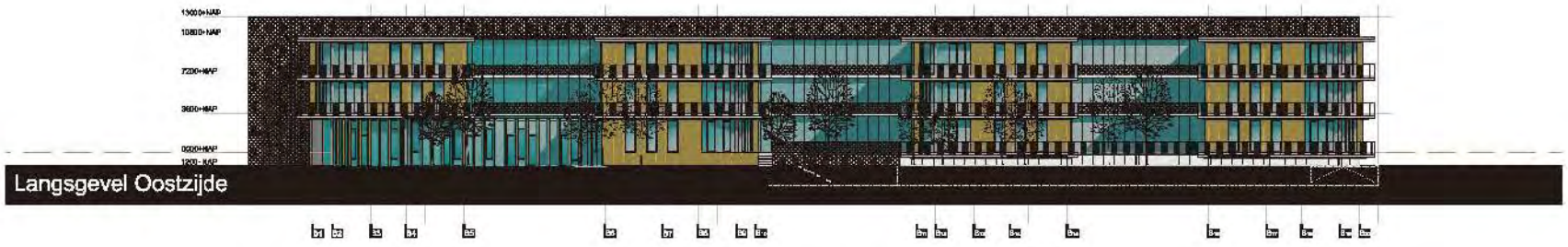
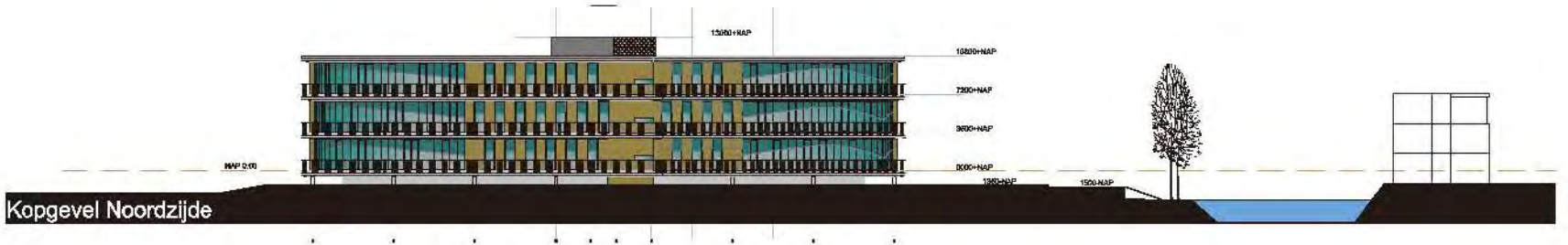
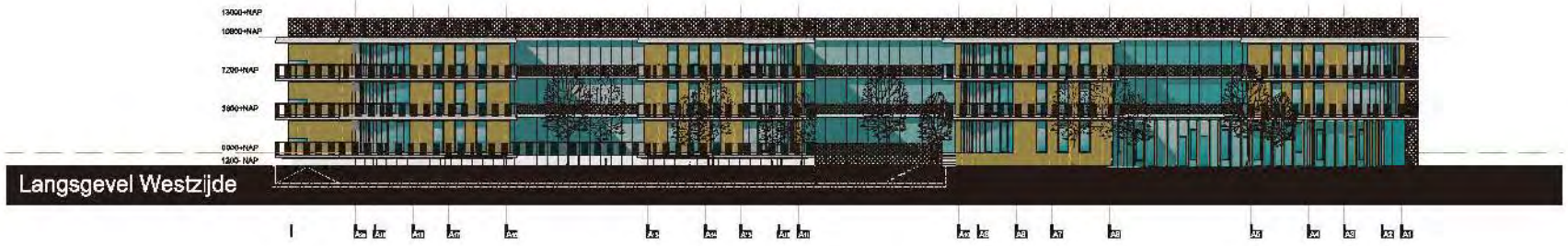
● ARCHITECT  
Dutch Health Architects  
● PHOTOGRAPHER  
Dutch Health Architects

Dutch Health Architects was asked by Argos Zorggroep (healthcare group) to design the Marnix Center for Prevention and Rehabilitation, as well as to write a program of requirements. Between the writing and discussions, the spatial model was visualized. Thereafter, a meeting was held with the client to give one consolidated architectural response to both neutral and group homes; for the placement of both long-term geriatric care as well as for short-term care and rehabilitation. Including all combined healthcare and recreational services. A concept that could accommodate future adjustments.

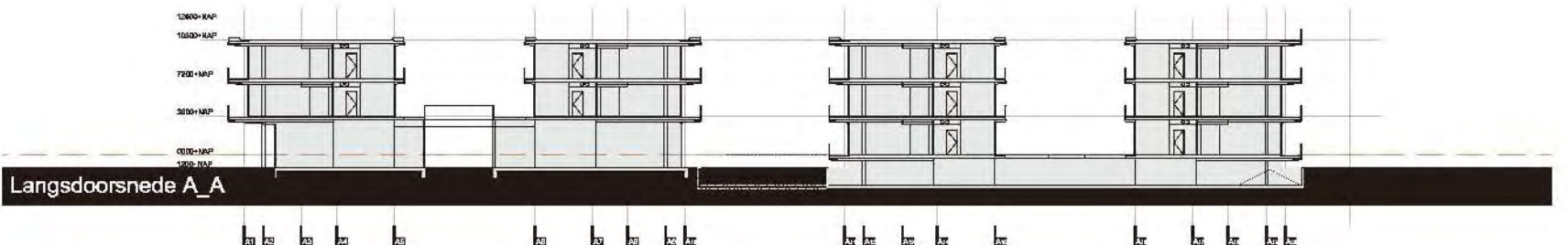
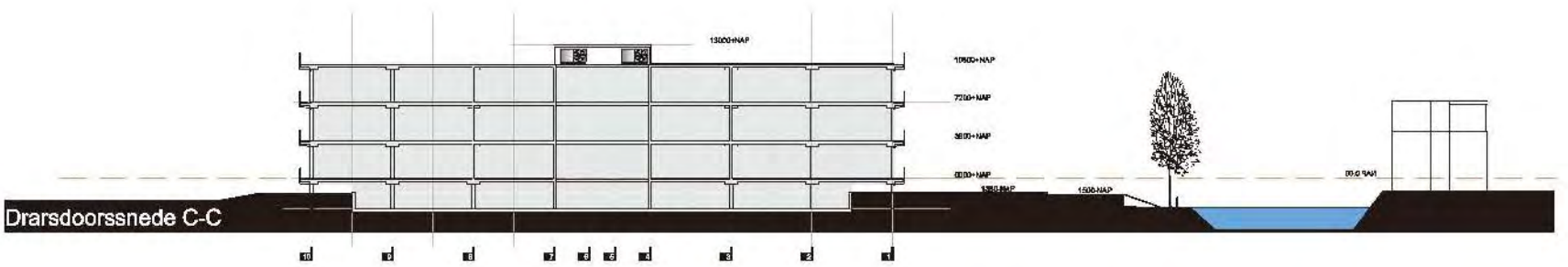
To this end, individual rooms were created for all residents overlooking a central living room. Additionally, every group of eight rooms has its own living environment with maximum functional spaces and minimal traffic areas. The enormous view from the living rooms, the pleasant atmosphere and the presence of a restaurant near the entrance all contribute to a stimulating environment, custom made for recovery. The project focused on society and with a sense of belonging. With this urban plan, one can easily anticipate the many developments in the immediate area and future expansion.



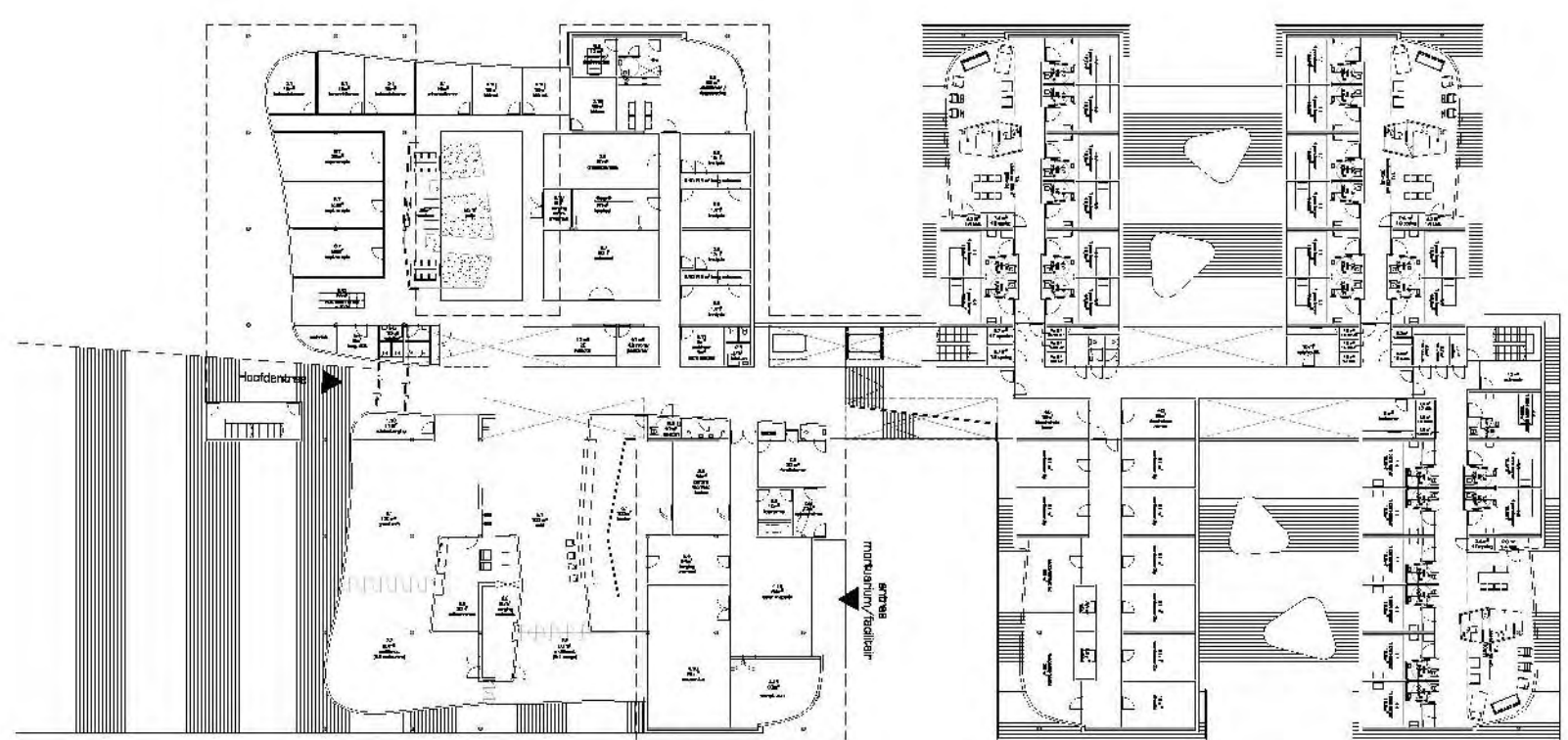
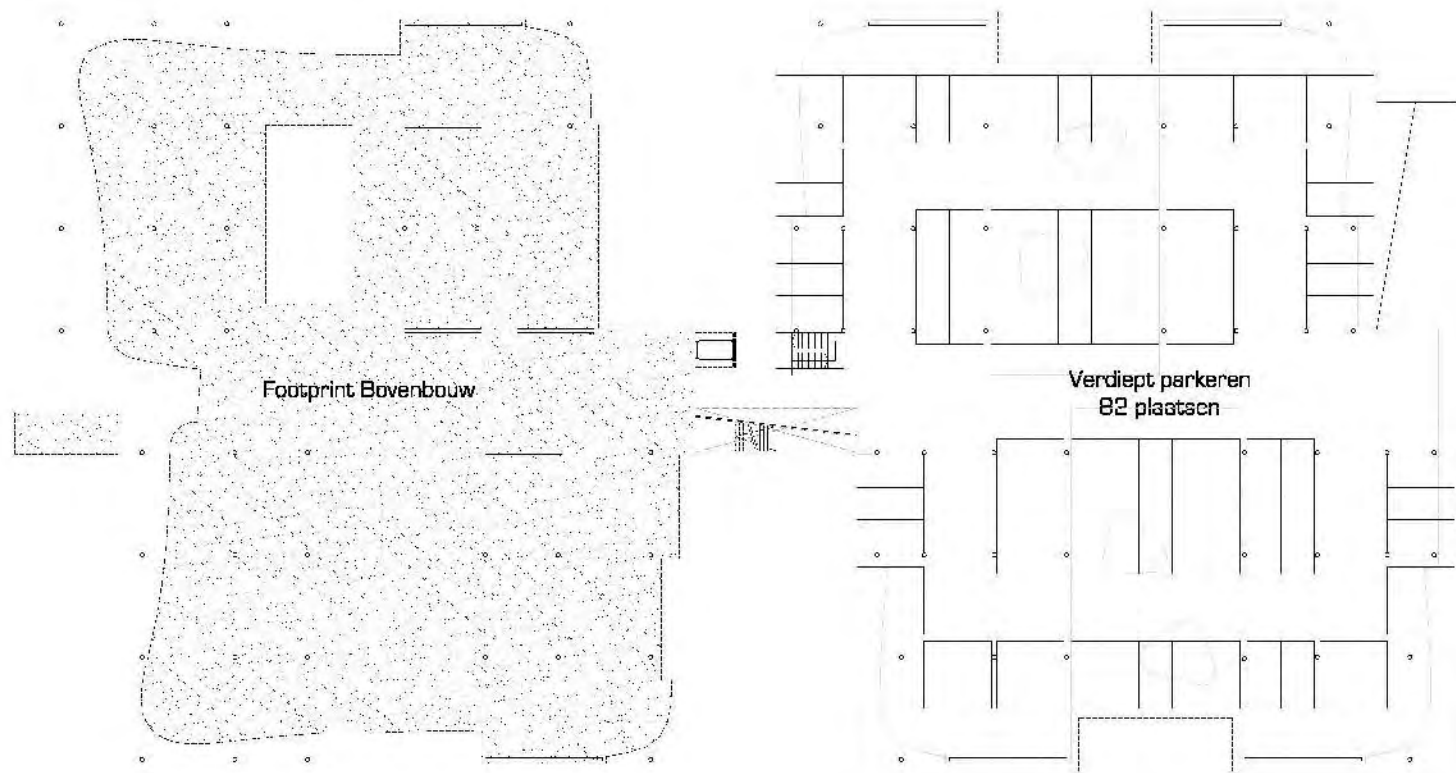




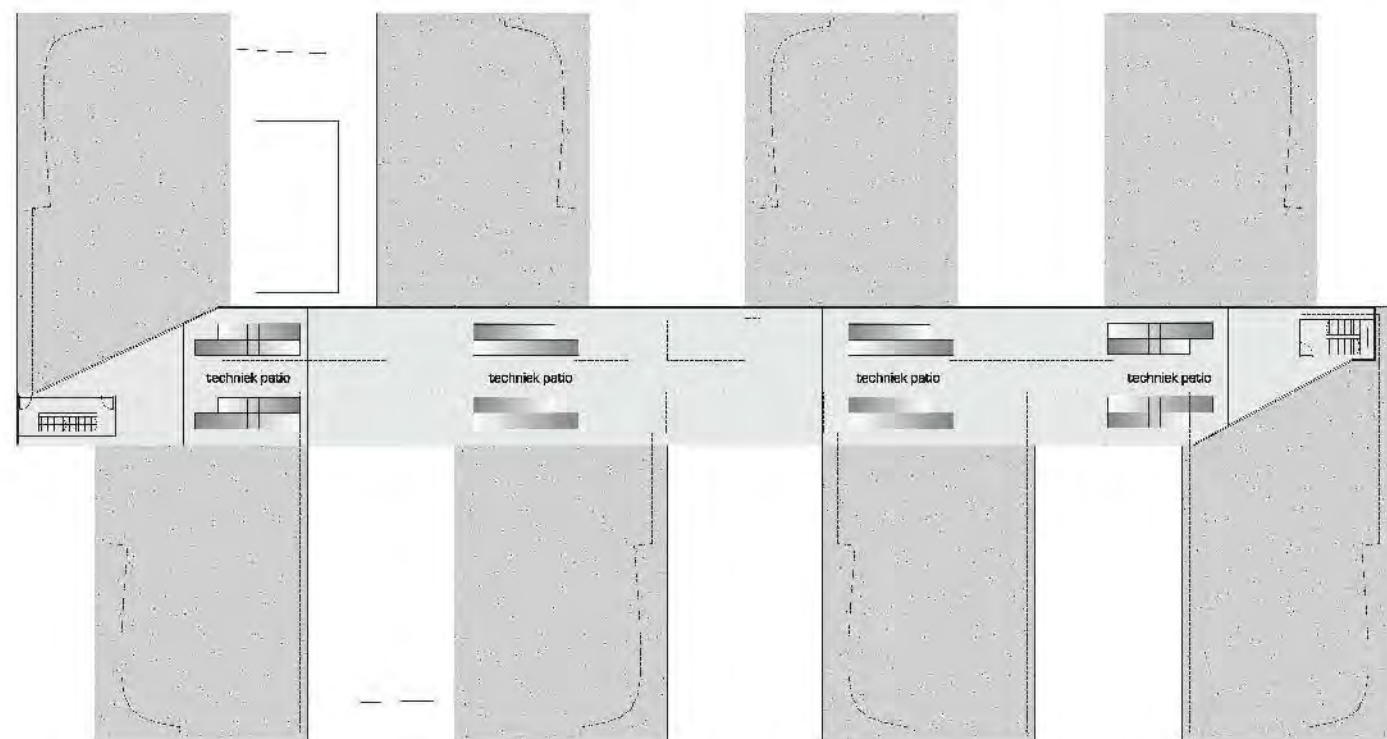
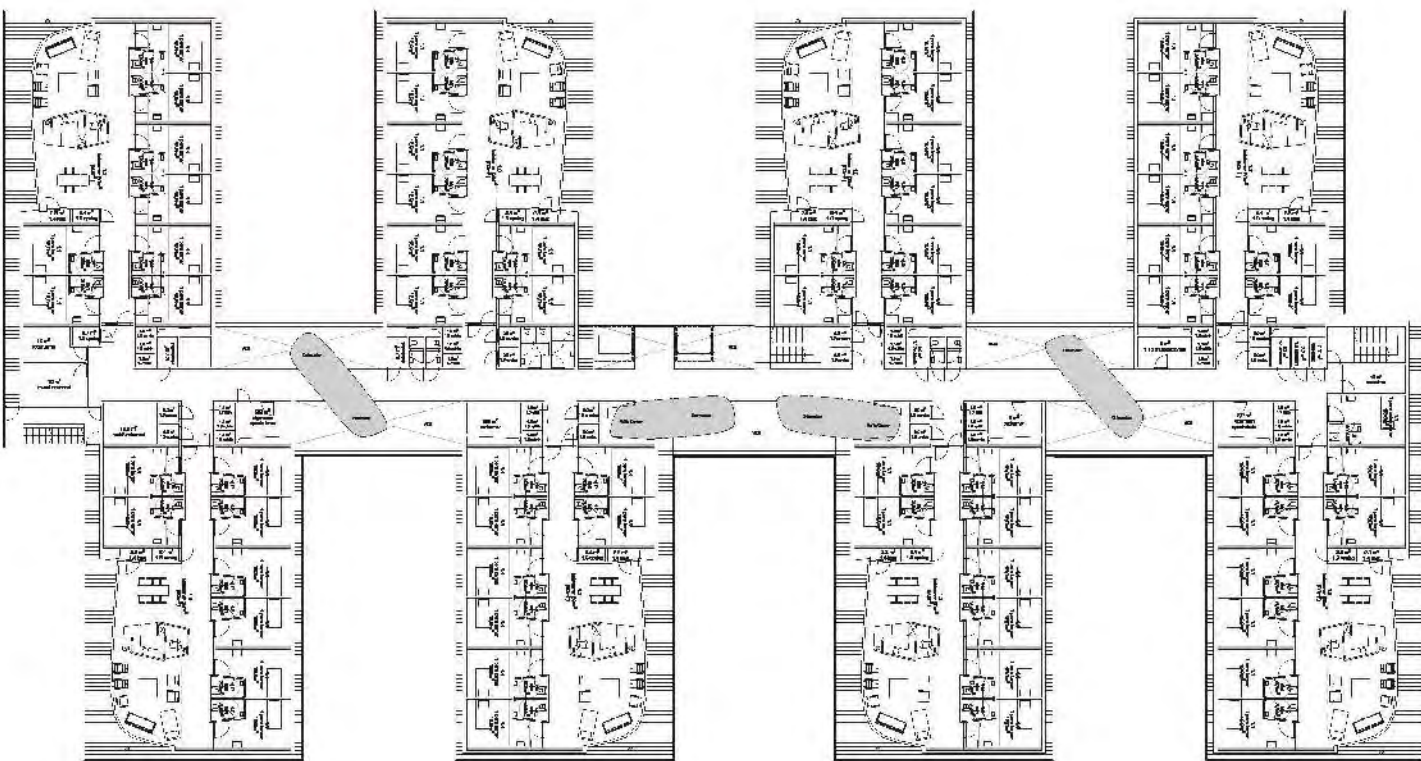














## ERASMUS PARK IN GOES

● ARCHITECT

Dutch Health Architects

● AREA

26,912m<sup>2</sup>

● PHOTOGRAPHER

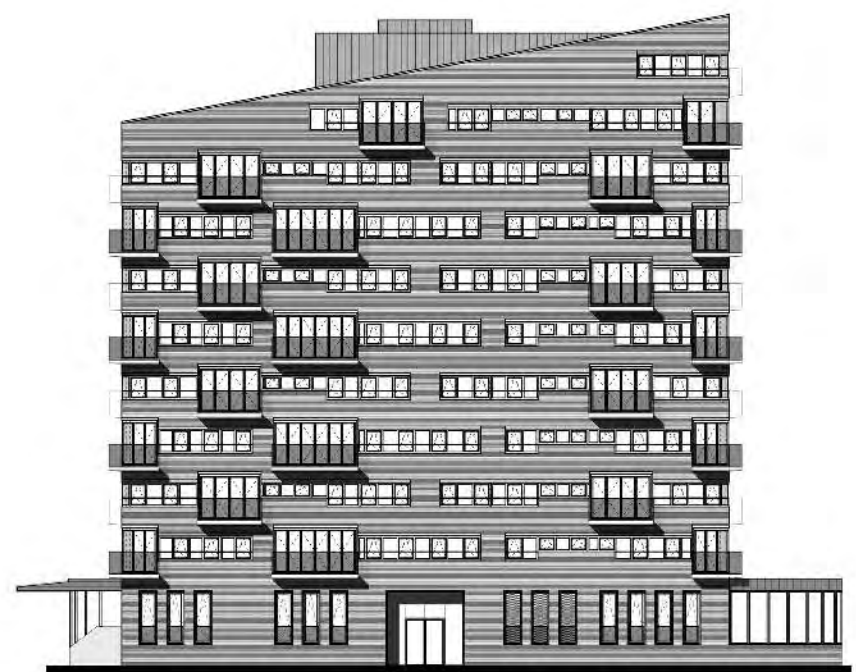
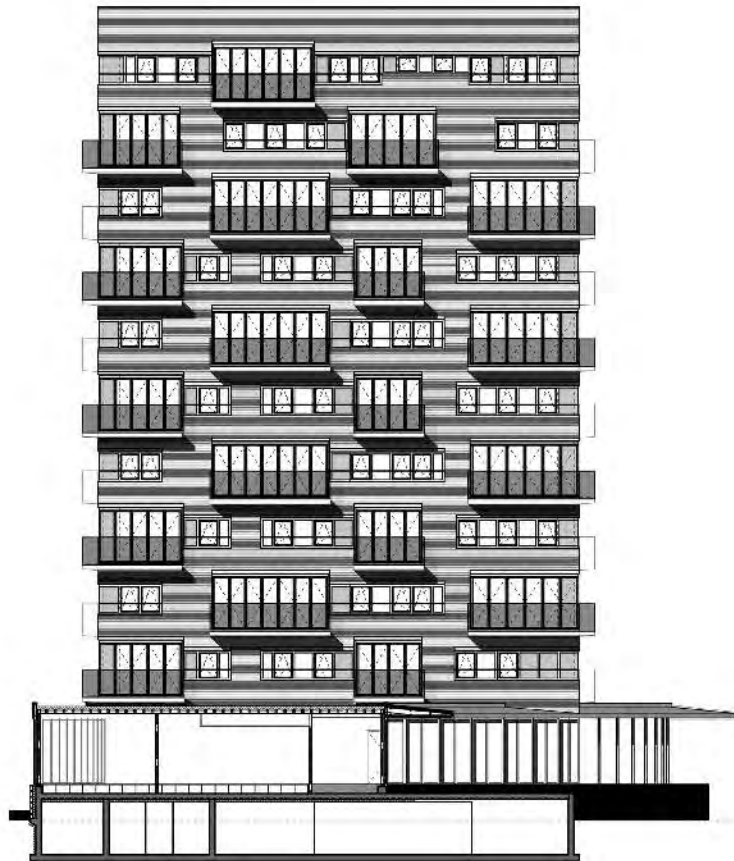
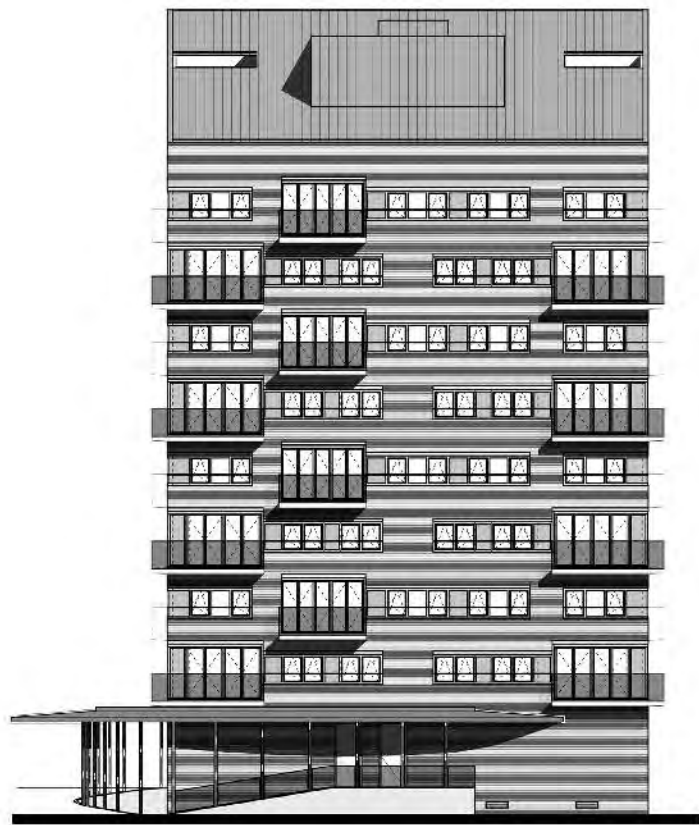
Dutch Health Architects

In the Erasmus Park in Goes, DHA designed a new assisted living center where residents can live independently and are assured of quality care whenever needed. Housing corporation, care provider and developer are all joined together to create a comprehensive vision of a pleasant, high quality, durable and energy-conscious assisted living center. The municipality and local residents worked together in order to spatially and functionally integrate the new location into the neighborhood. Great views, plenty of sunlight, assurance of privacy and the advantage of togetherness were the most important basic requirements.

DHA translated these requirements into a design consisting of four residential towers of different heights, playfully positioned in a park-like setting. The towers are connected by an underground parking garage and partially by a one-floor substructure containing the community and commercial facilities. Not only residents of the complex, but also the neighborhood residents can use these facilities. The result is an excellent boost for the neighborhood, where the socially broad design can easily respond to current developments and future scenarios.



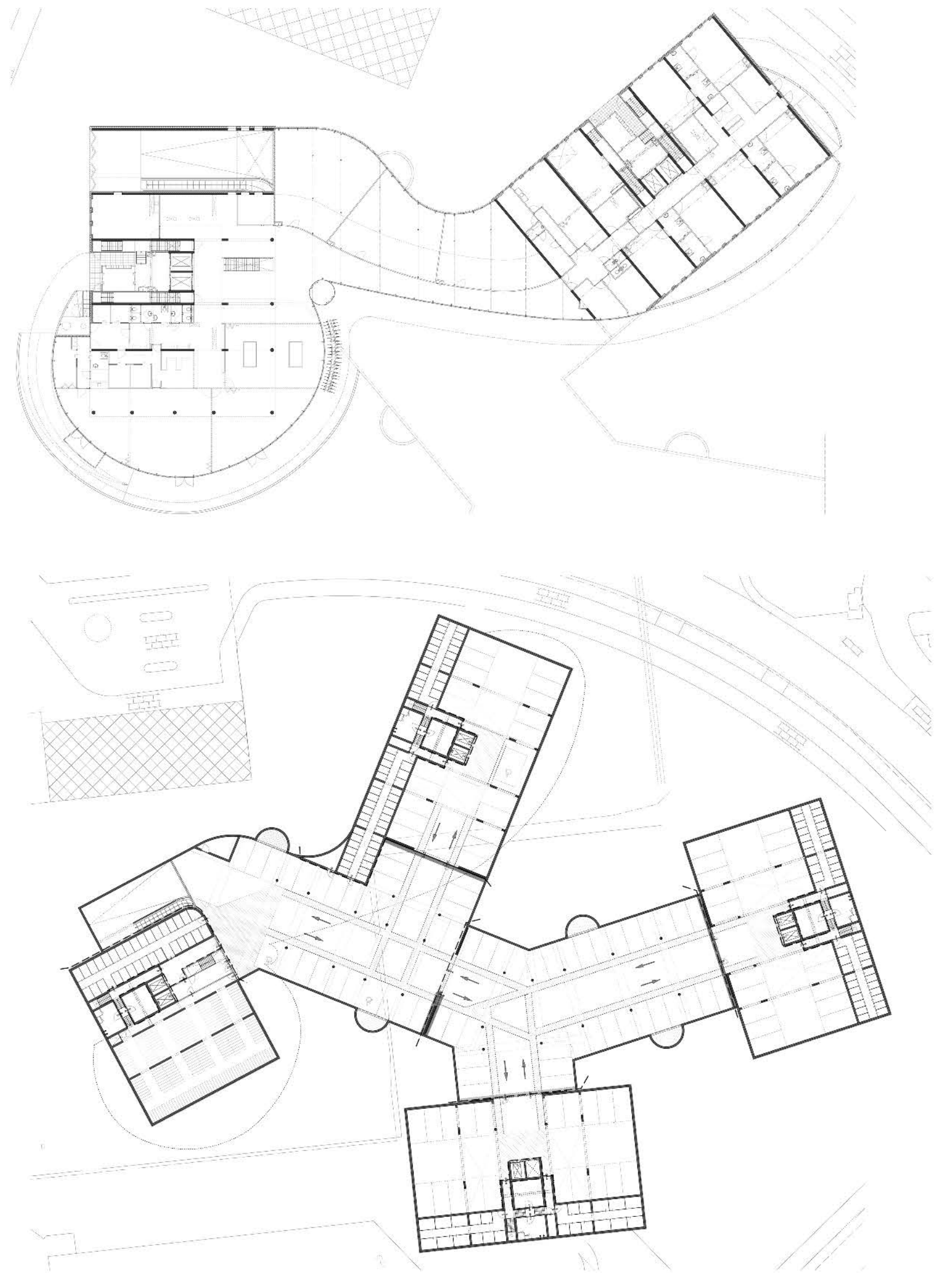




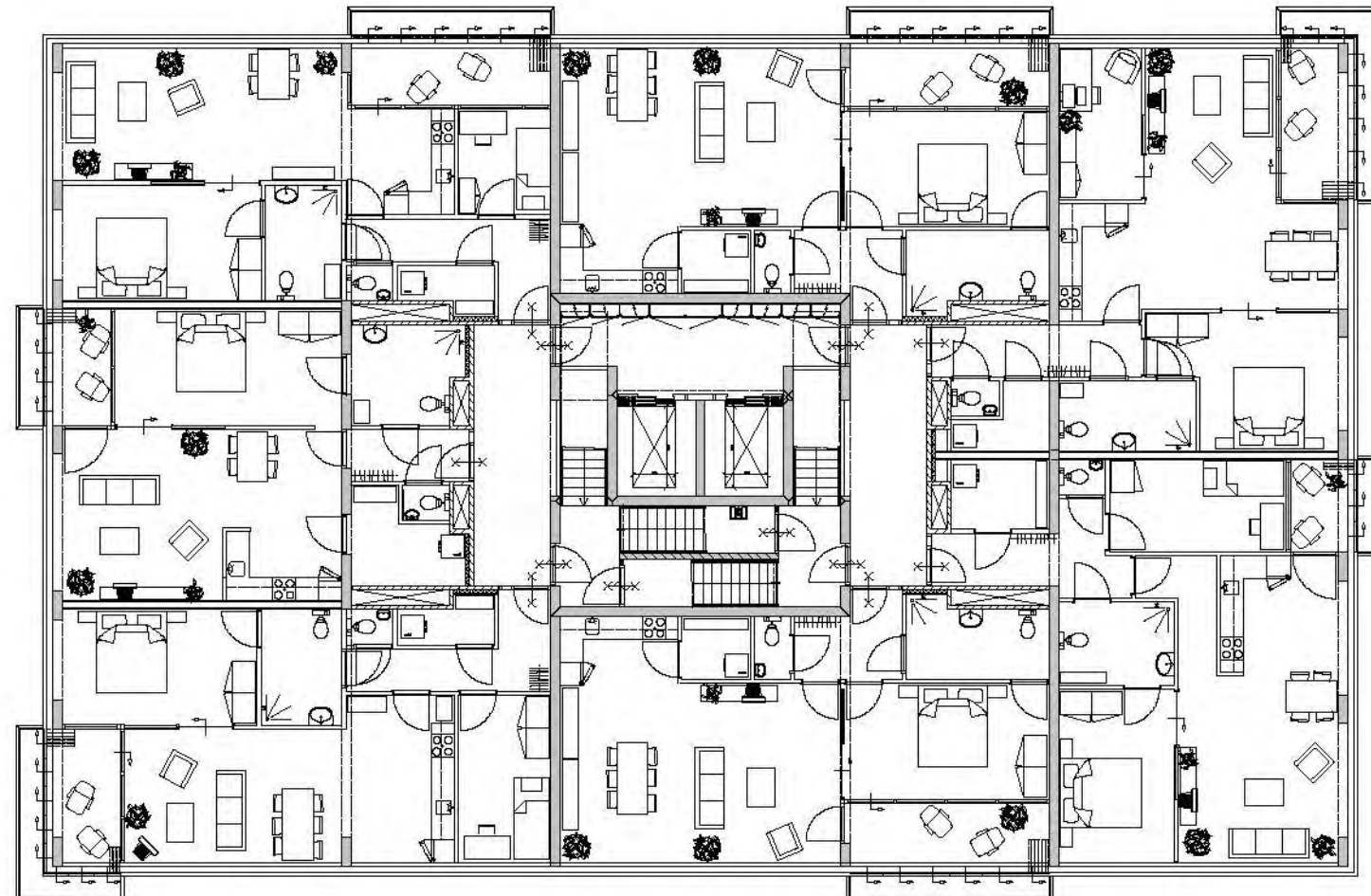
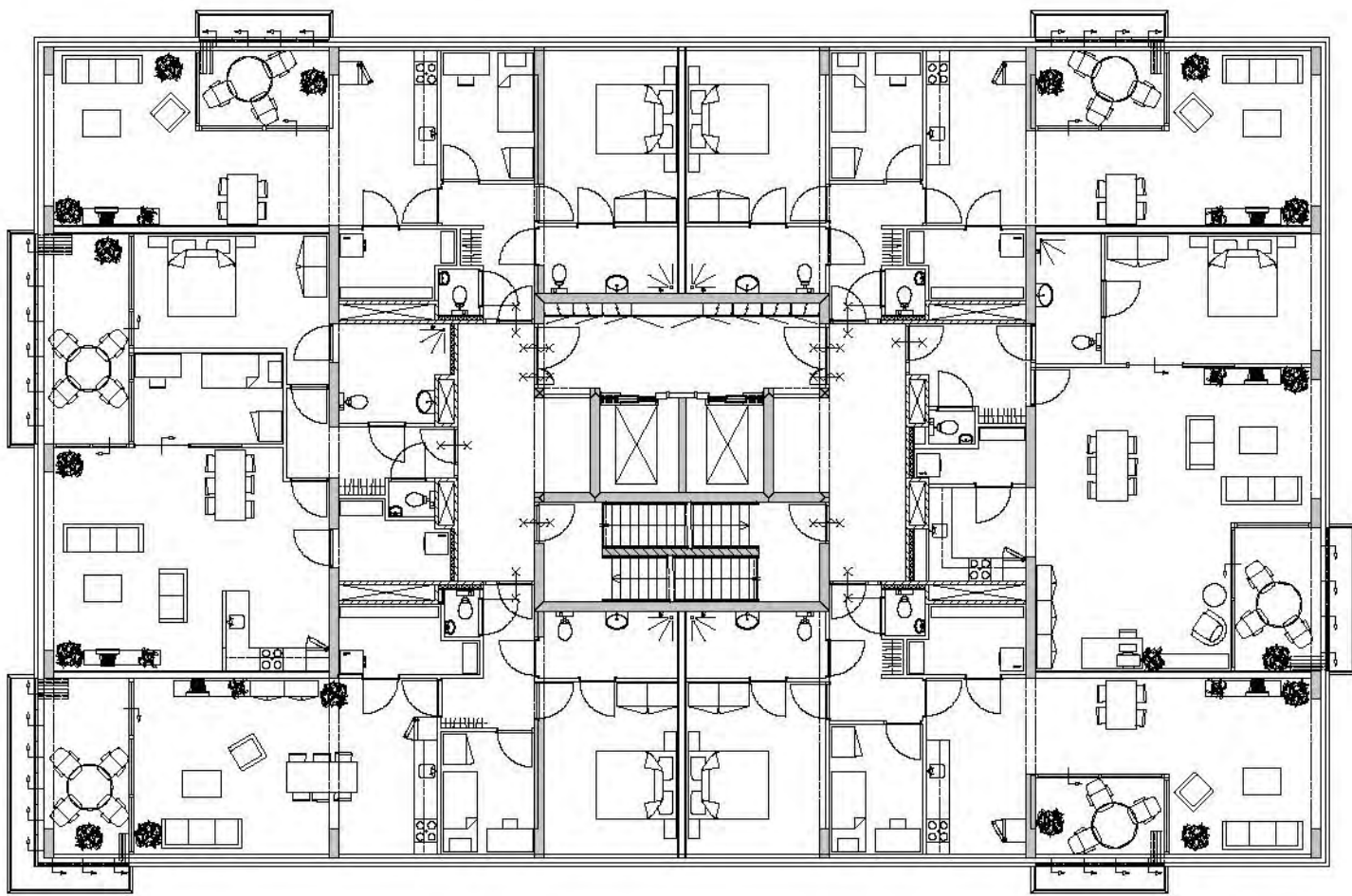




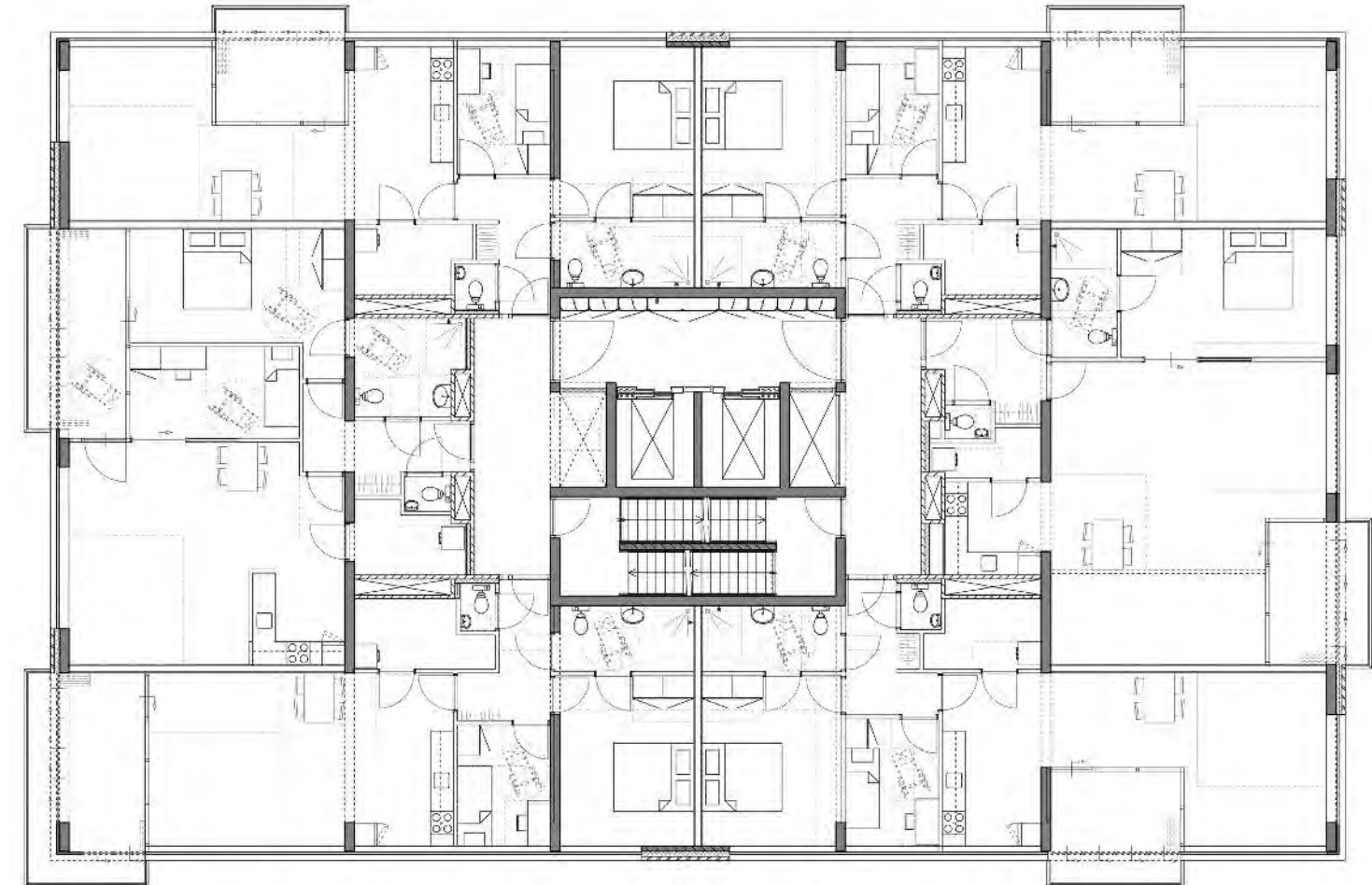
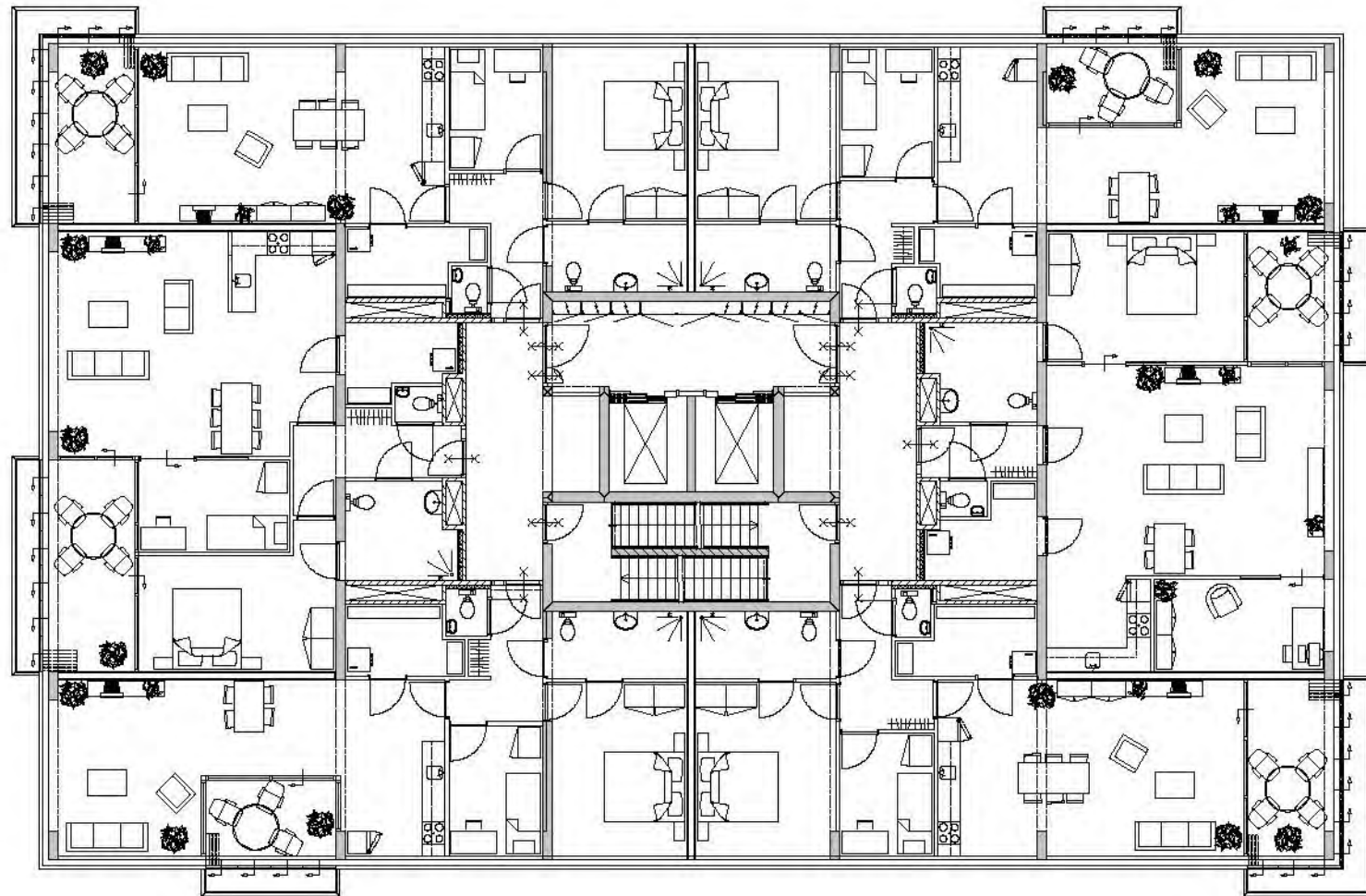
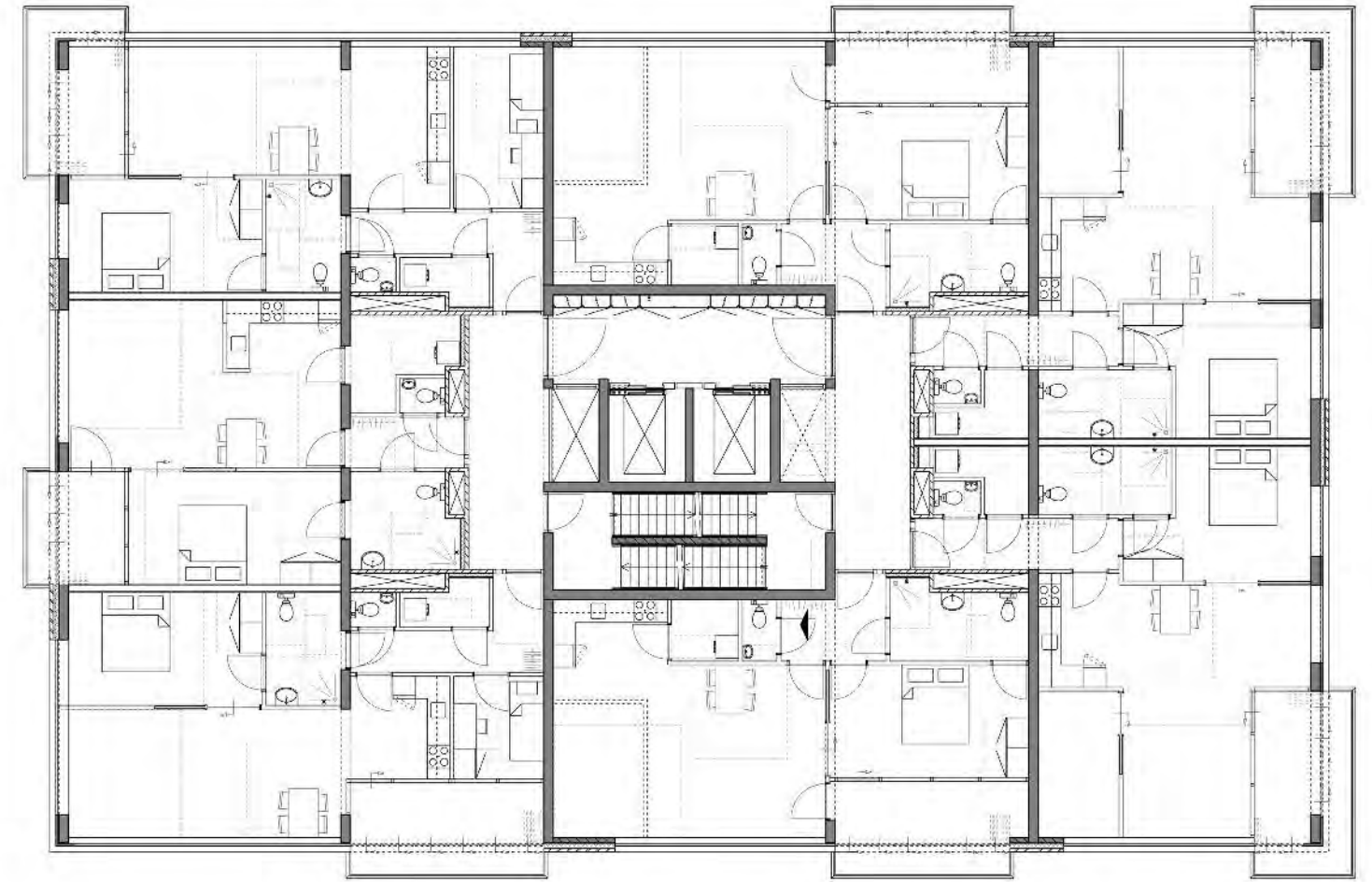












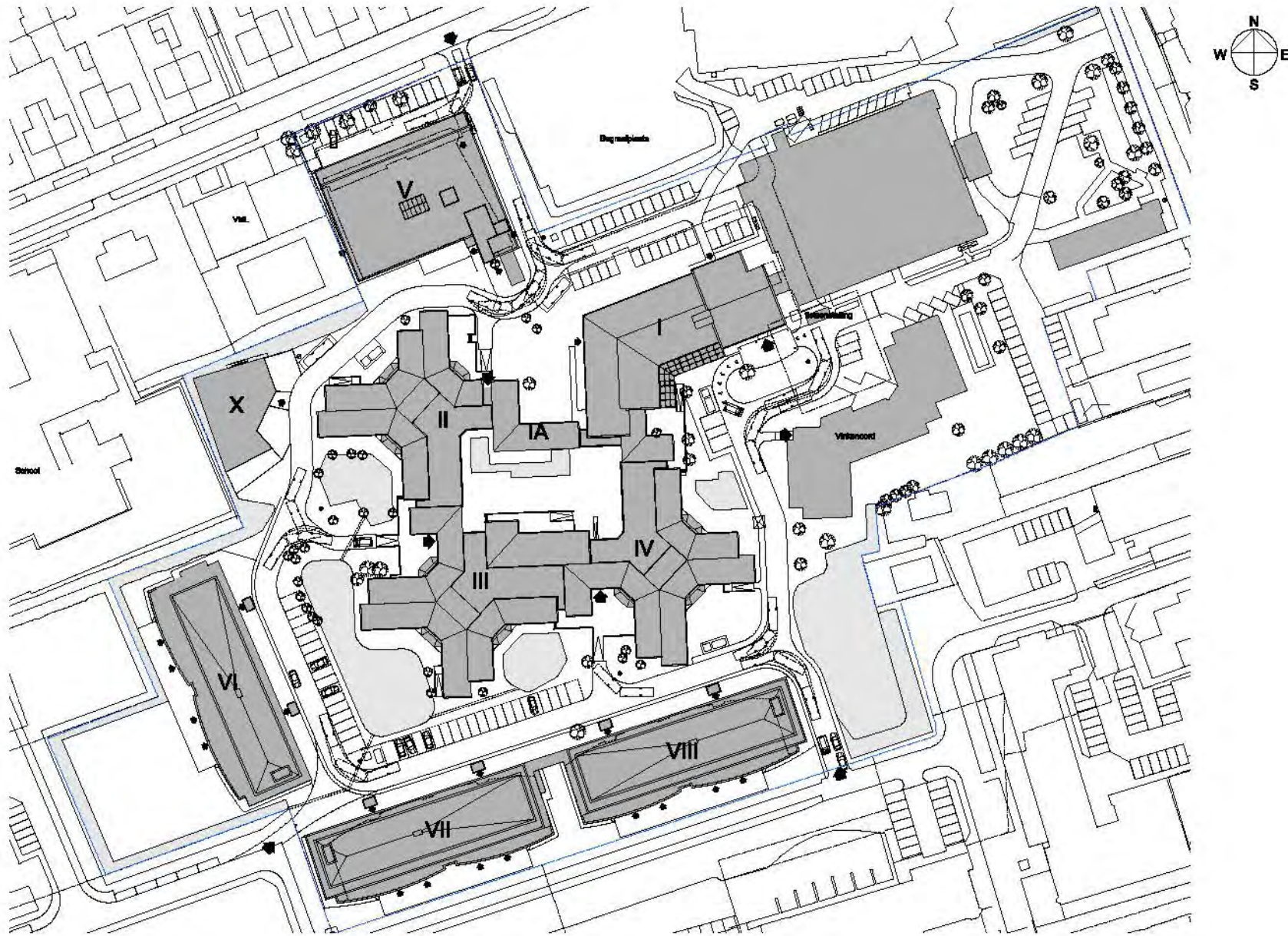


# ZUWE MARIA-OORD ASSISTED LIVING FACILITY

● ARCHITECT  
Dutch Health Architects  
● PHOTOGRAPHER  
Dutch Health Architects

Zuwe Maria-Oord is a small assisted living facility for elderly people, situated in the middle of the residential areas and the core of Vinkeveen. The facilities include space for residents with a somatic or psycho-geriatric care. There are also facilities for day care and day treatments, rehabilitation, medical and paramedical care, care apartments, staff housing and privately owned homes for those who want “nearby” care. Here, elderly people can live independently in a familiar and safe environment with ample privacy. Reason for the new building was the new vision of residential care, with the well-being of the residents at the core, not based on limitations but on possibilities and wishes. Next to that, the old building did not meet today’s requirements and

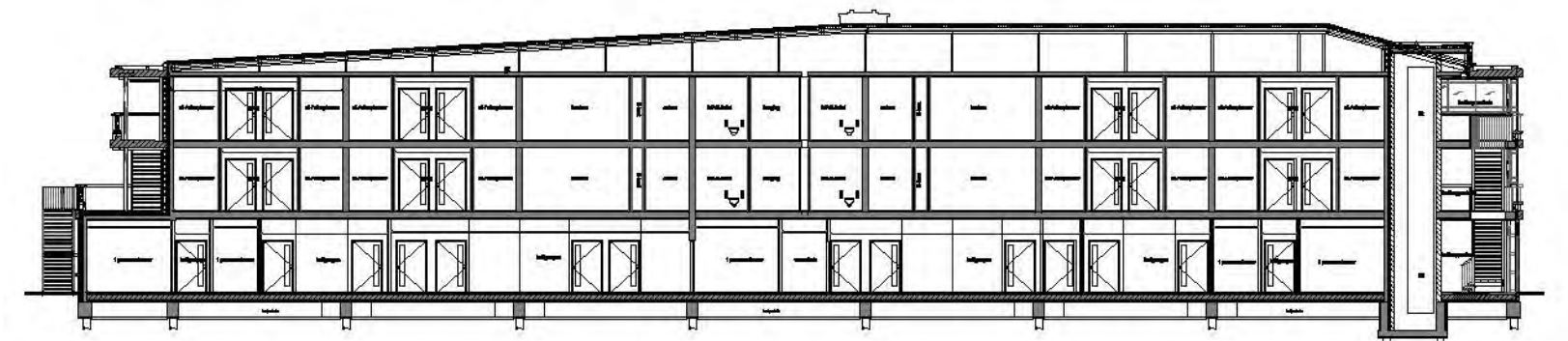
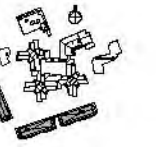
renovation of the existing housing was no longer possible. Because nearby residents also received offers for other facilities, the new building became part of the city. The mix of facilities is shaped by buildings that differ in size, material, extent and architecture (style). Yet the relationship survived and fits to the size of the complex within the scale of the environment. The care facility is located next to the Vinkeveen lakes and close to the old village, marked by the high church steeple and monastery. As “care campus”, this new facility fulfils Zuwe Maria-Oord’s historic role: taking care of people. With the exception that the current residents feel more like hotel guests than patients; and care, housing and community well-being are interwoven into one total concept.







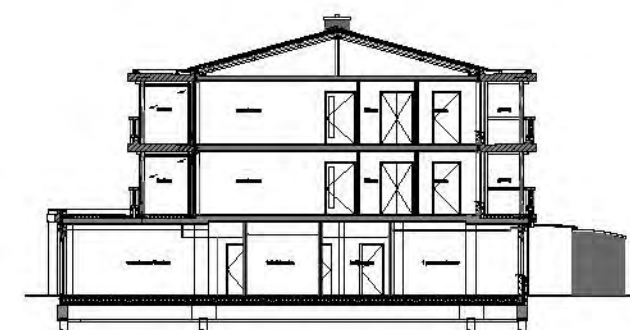
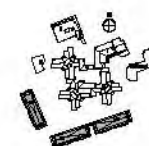
WEST ELEVATION



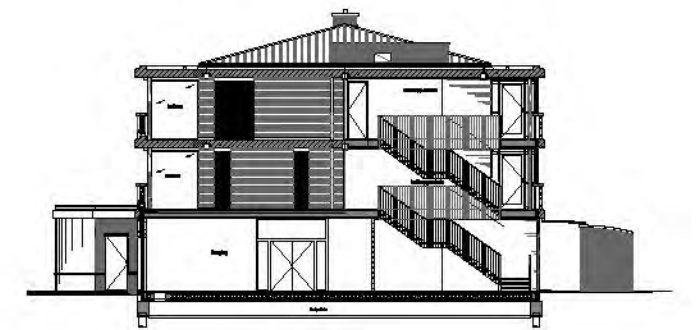
SECTION A-A



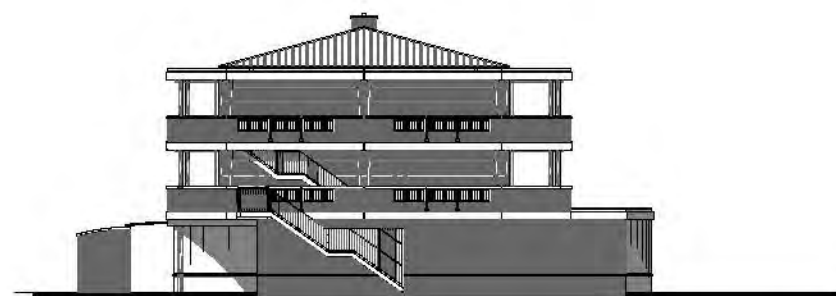
EAST ELEVATION



SECTION B-B



SECTION C-C

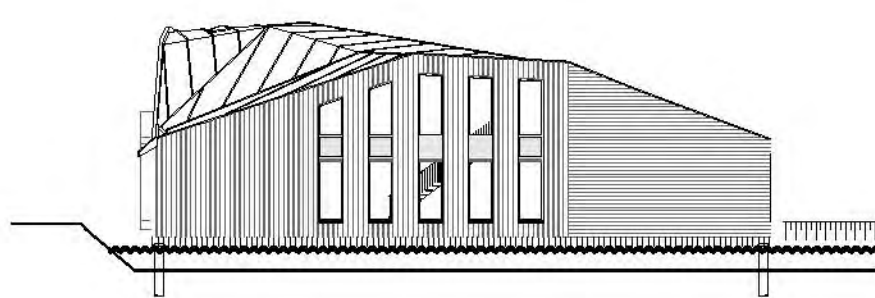


NORTH ELEVATION

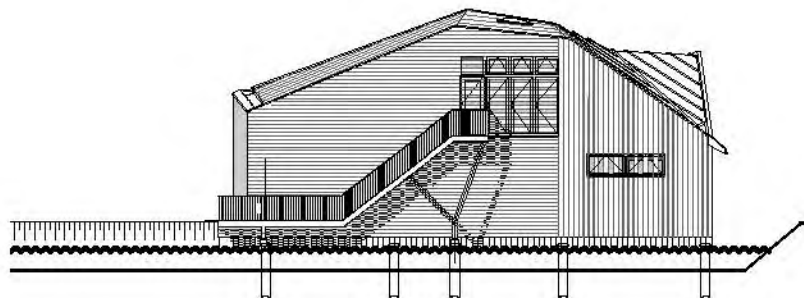


SOUTH ELEVATION

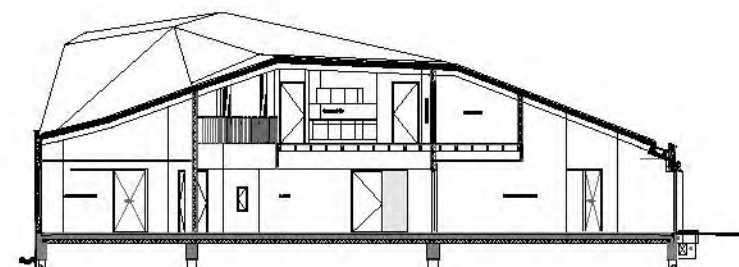




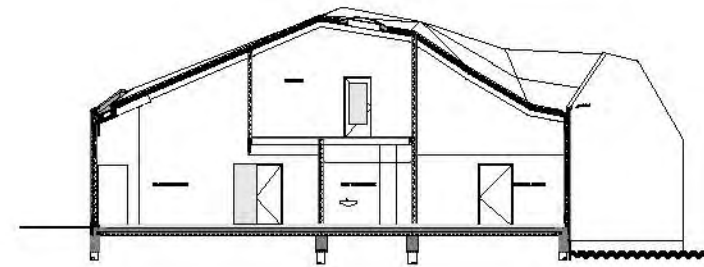
WEST ELEVATION



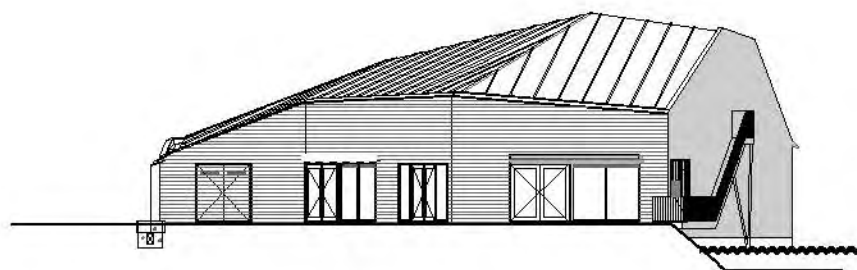
NORTH ELEVATION



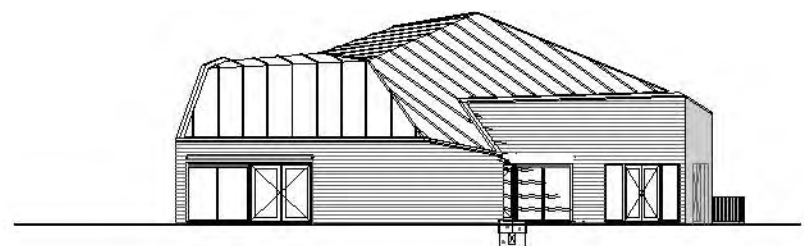
SECTION A-A



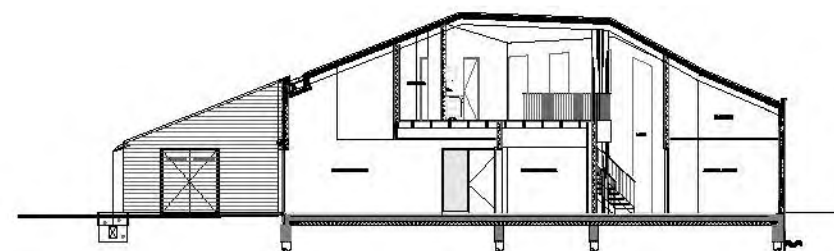
SECTION B-B



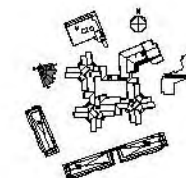
EAST ELEVATION



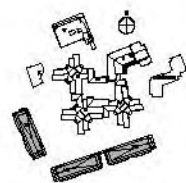
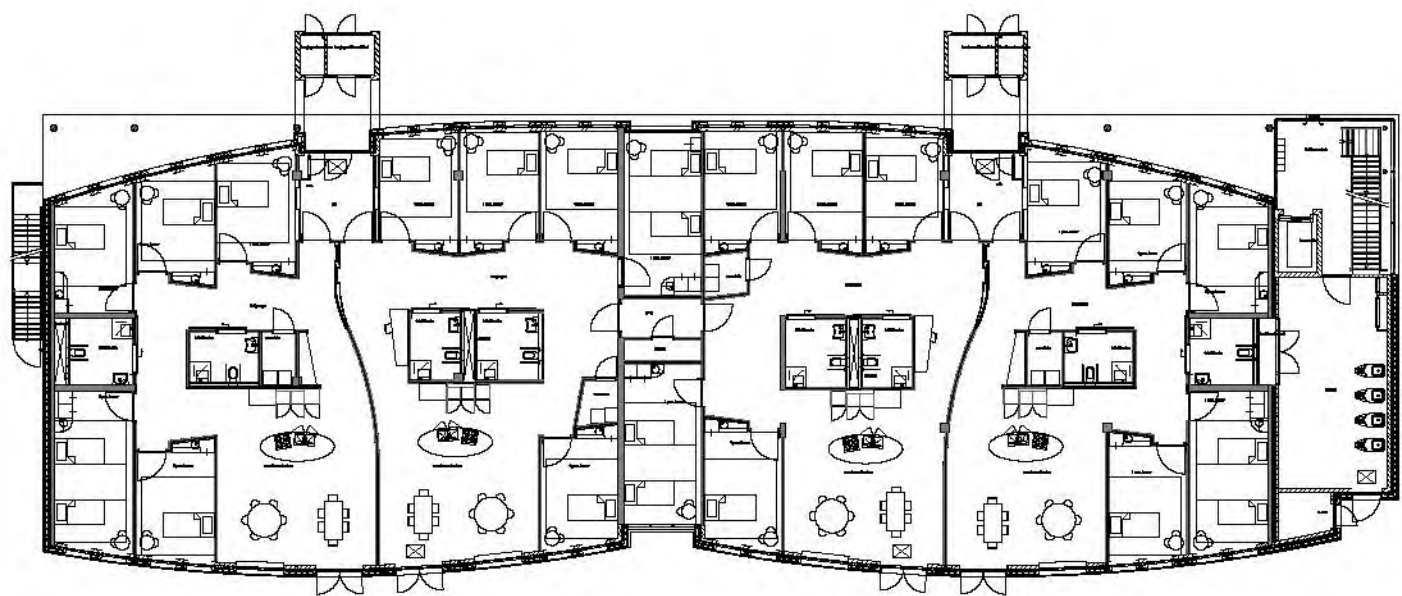
SOUTH ELEVATION



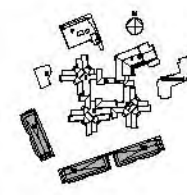
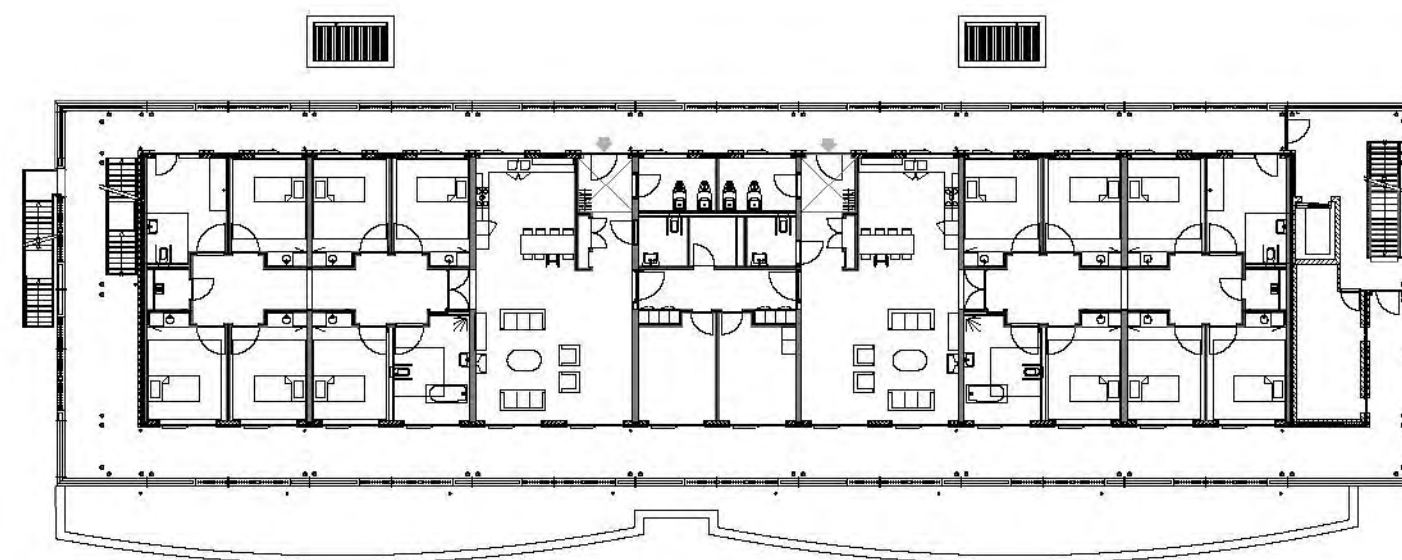
SECTION C-C





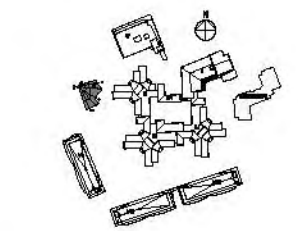


Building VI, VII and VIII - Ground Floor

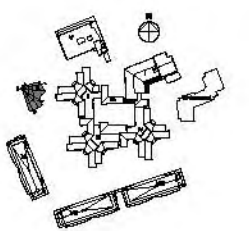
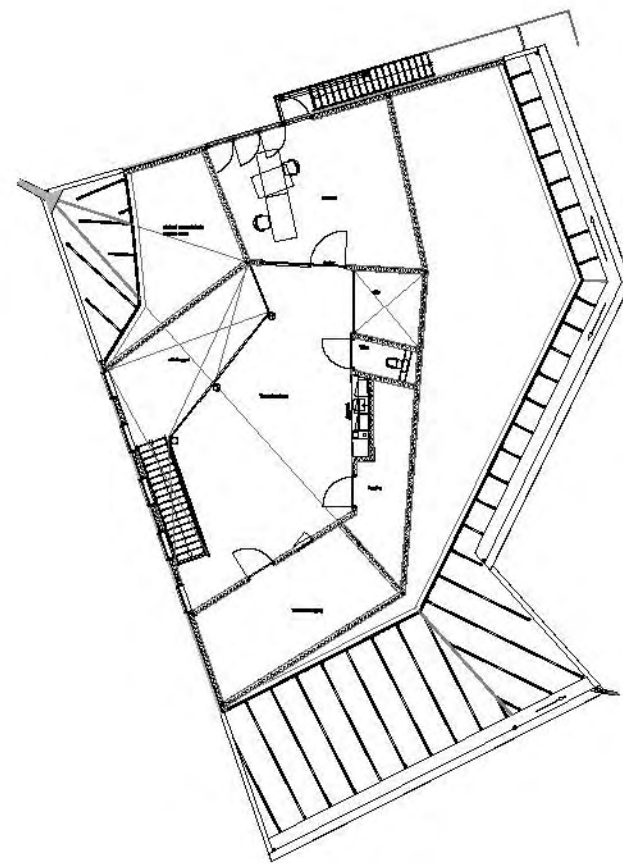


Building VI, VII and VIII - First and Second Floor Plan





Building X - Ground Floor



Building X - First Floor



# KADOELERBREEK

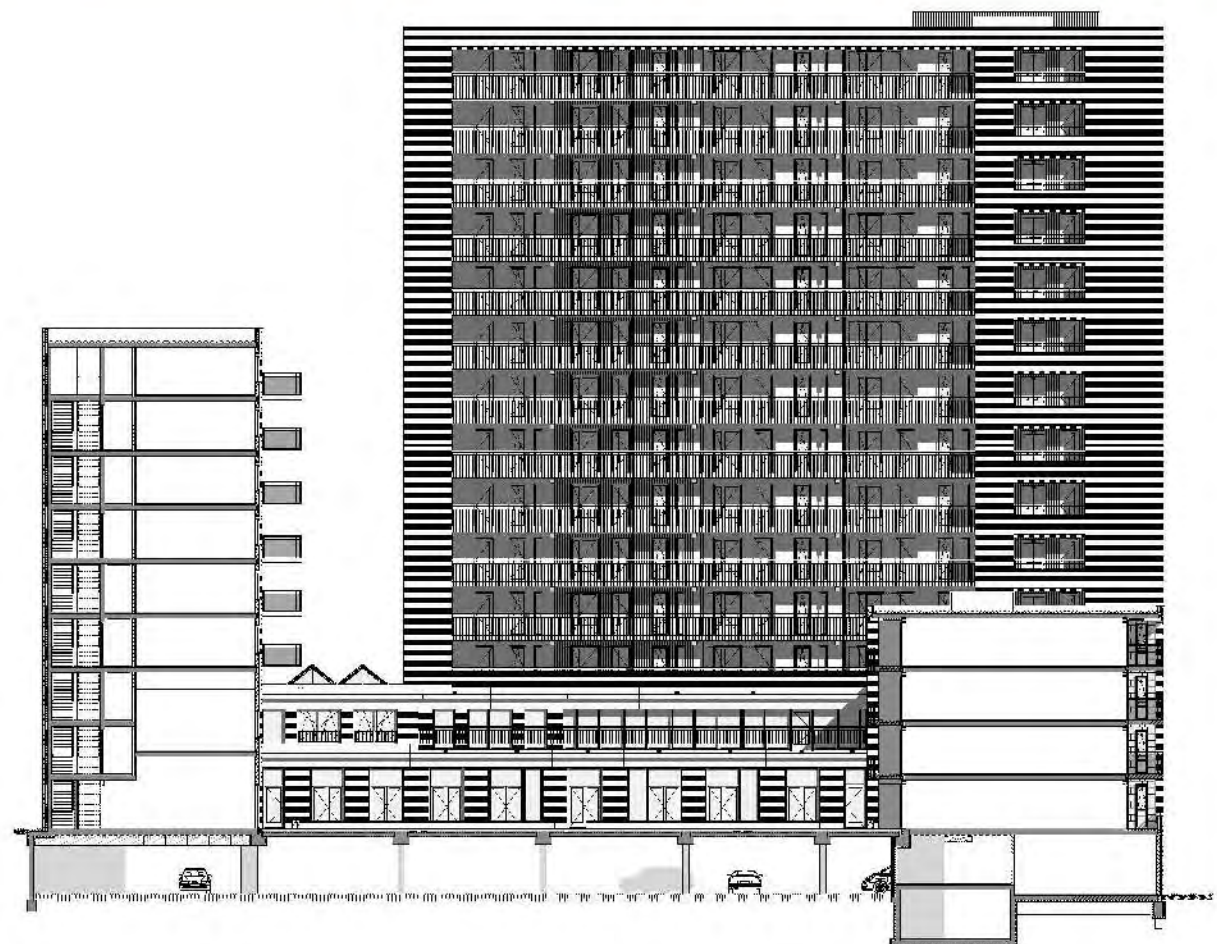
● ARCHITECT  
Dutch Health Architects  
● AREA  
32,000m<sup>2</sup>  
● PHOTOGRAPHER  
Dutch Health Architects

The realization of the Kadoelerbreek in Amsterdam has created a special place where residents can continue to live as long as possible in their own familiar neighborhood. Thus, Kadoelerbreek gives a boost to the restructuring of district Banne North. The new project consists of life-proof housing (social and free rent) for old and new residents. Residents of the old building could return in the new building. For the neighborhood and its residents, comprehensive care is available and in the local restaurant Coco's Kitchen residents meet each other. The new development, Kadoelerbreek, is currently the largest housing project in Amsterdam and also makes up part of the planning for the renewal of the De Banne district. The new building consists of 180 apartments, a service center, welfare facilities and a parking lot, and will form a new Care Corner together with the adjacent district

renewal planning. These buildings can accommodate various kinds of apartments: market rental, owned, protective environment and wheelchair accessible apartments. These are completed to meet various needs, satisfy the applicable grant requirements and are easy to care for due to their broad set-up. The building platform includes a parking facility on the ground floor and the first floor includes the majority of the community-oriented facilities. Underlining the building's neighborhood-friendly character, the façade of the platform is largely transparent. Each residential building has a clear form and all are built mainly of brick. A collective roof garden overlooks the adjoining nature reserve. The various components throughout the complex are completed with a color mix of charcoal, orange and off-white masonry; each with its own identity.





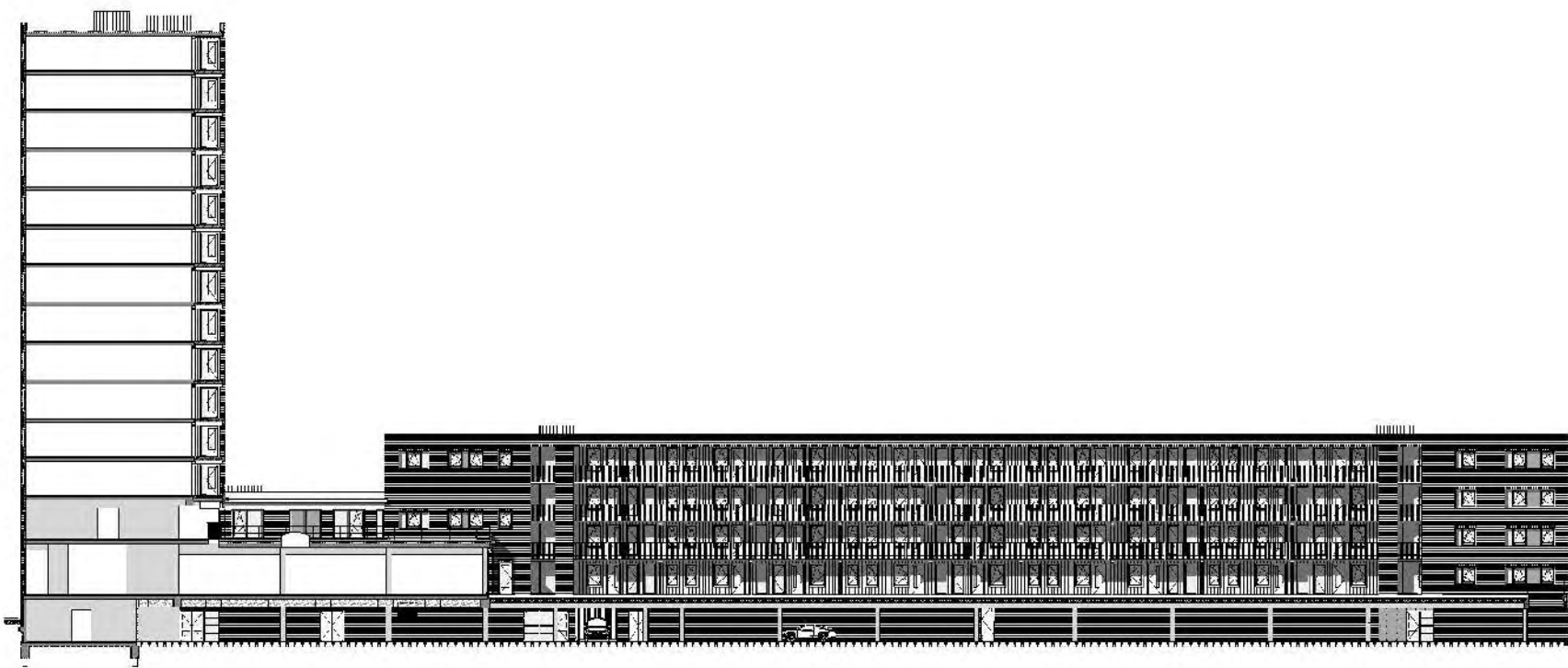


ELEVATION



ELEVATION

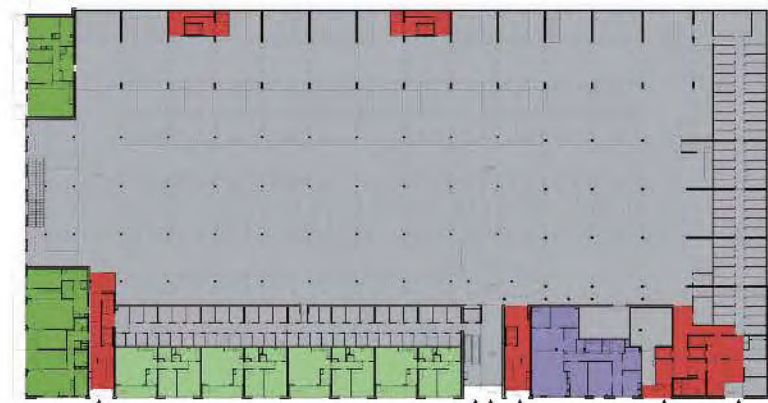




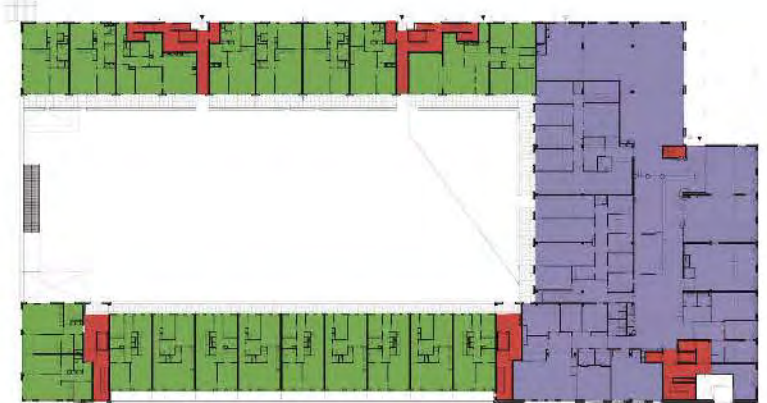
ELEVATION



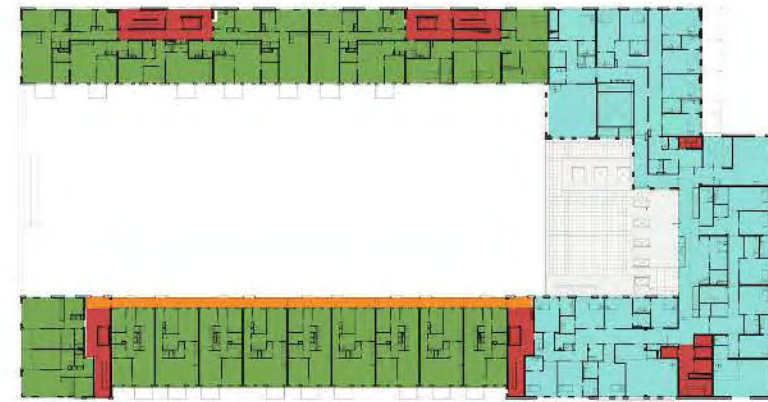




PLAN GROUND



PLAN 1ST FLOOR



PLAN 2ND FLOOR

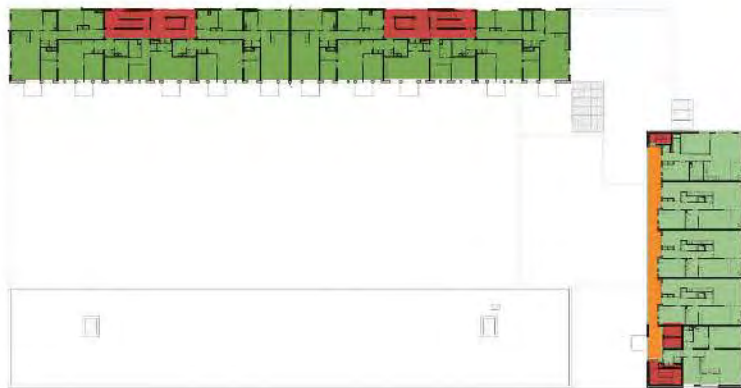


PLAN 3RD FLOOR

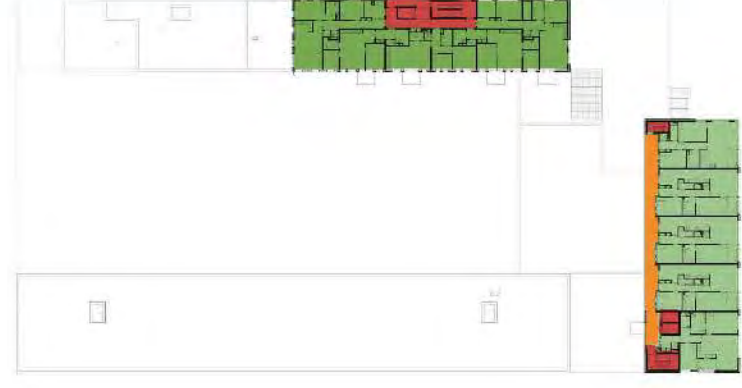




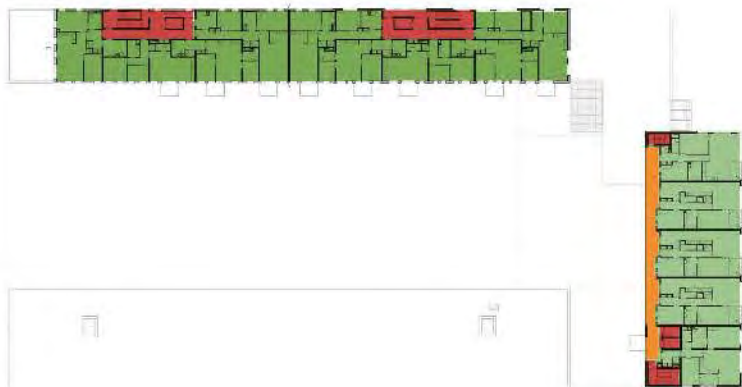
PLAN 4TH FLOOR



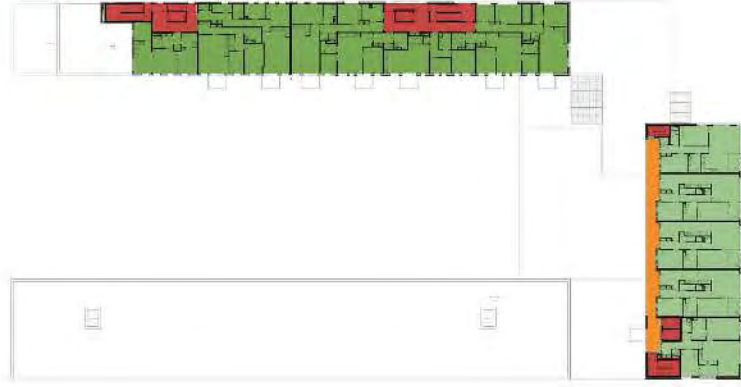
PLAN 5TH FLOOR



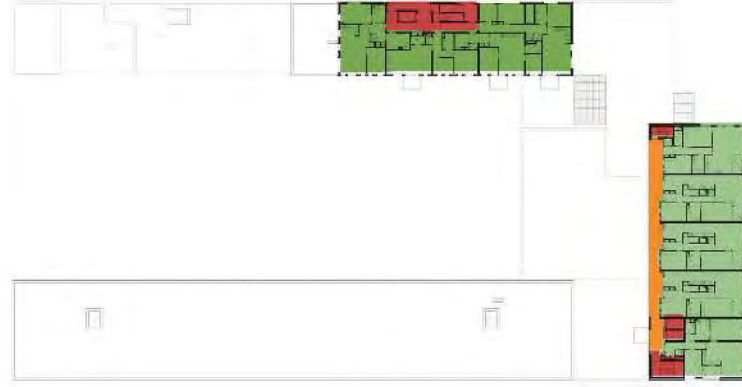
PLAN 8TH FLOOR



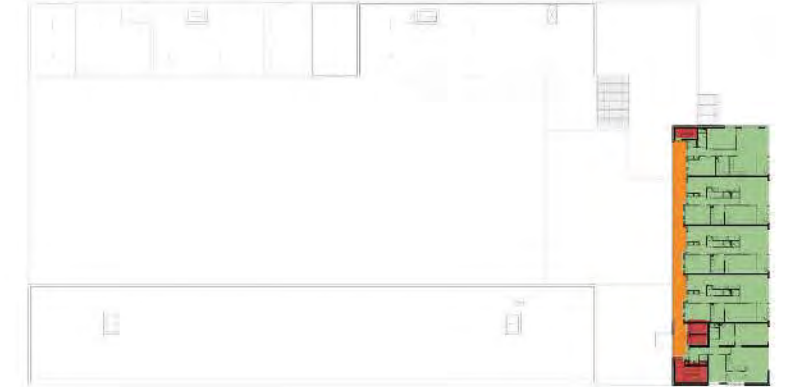
PLAN 6TH FLOOR



PLAN 7TH FLOOR



PLAN 9TH FLOOR



PLAN 10TH FLOOR

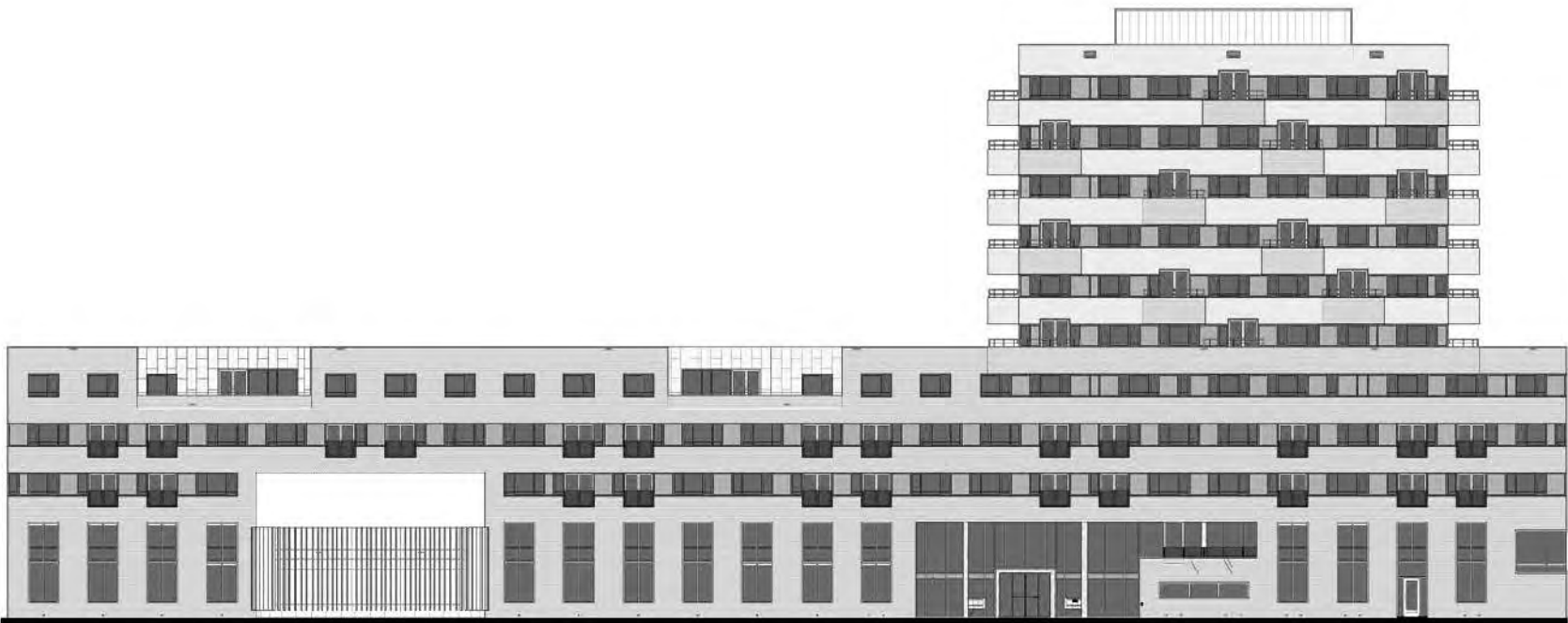


● ARCHITECT  
Dutch Health Architects  
● AREA  
15,568m<sup>2</sup>  
● PHOTOGRAPHER  
Dutch Health Architects

# MULTIFUNCTIONAL CARE COMPLEX HANZEBORG

Multifunctional Care Complex Hanzeborg is located in Hansa Park, a new residential area adjacent to the city center of Lelystad. A contemporary yet timeless and unique building where providing and receiving care has a new dimension added to it. DHA used the initial design as the basis for this building. A building where care, services and activities meet. It is the combination of different disciplines that gives strength to the complex. Hanzeborg has a strong position within the local urban dependency. In the present social context, private healthcare is no longer restricted to just one location.

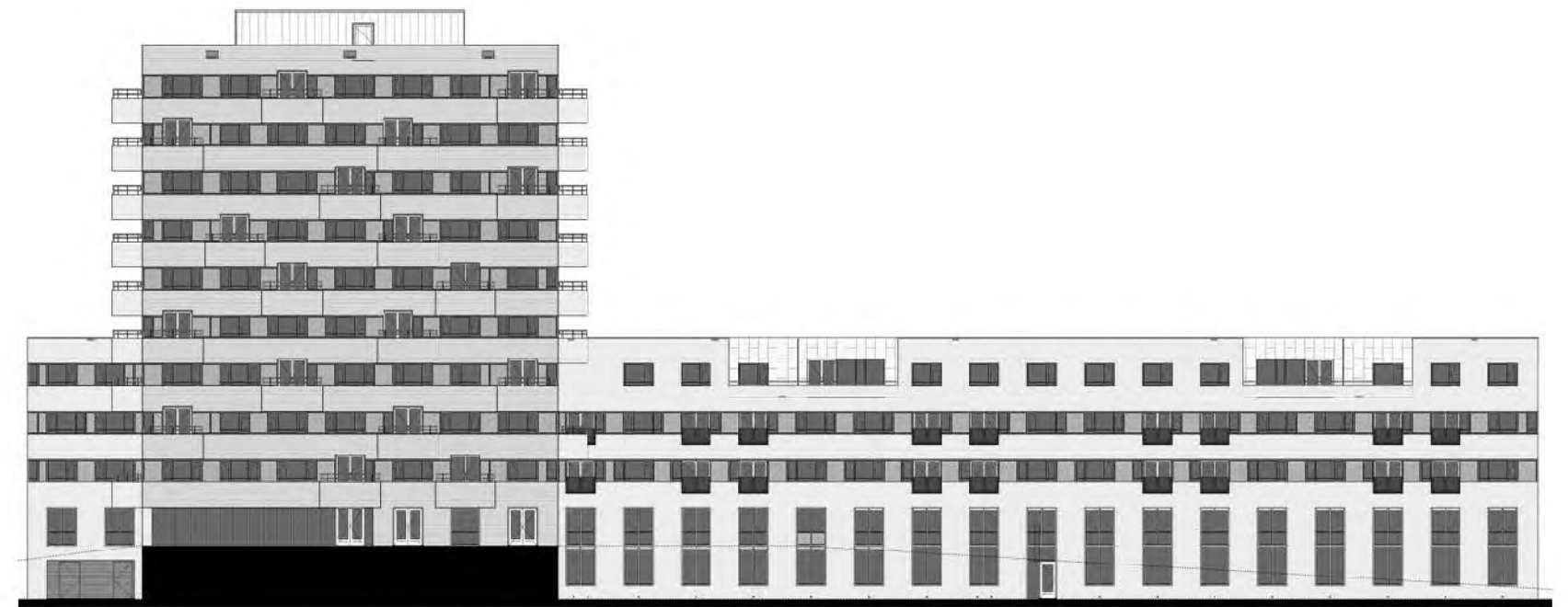
However, care should remain easily accessible. Social and recreational activities ran seamlessly together with the actual care. Hanzeborg had to become the center of the neighborhood, therefore, the two lower levels – where public functions are embedded – were designed as transparent and accessible as possible. For those enjoying a walk from the care facility to the park behind the building, interesting pedestrian routes through Hanzeborg are now offered. This building combines its transparent structure and public access to the entrance of the residential area through the park, forming a point of interest on the route.



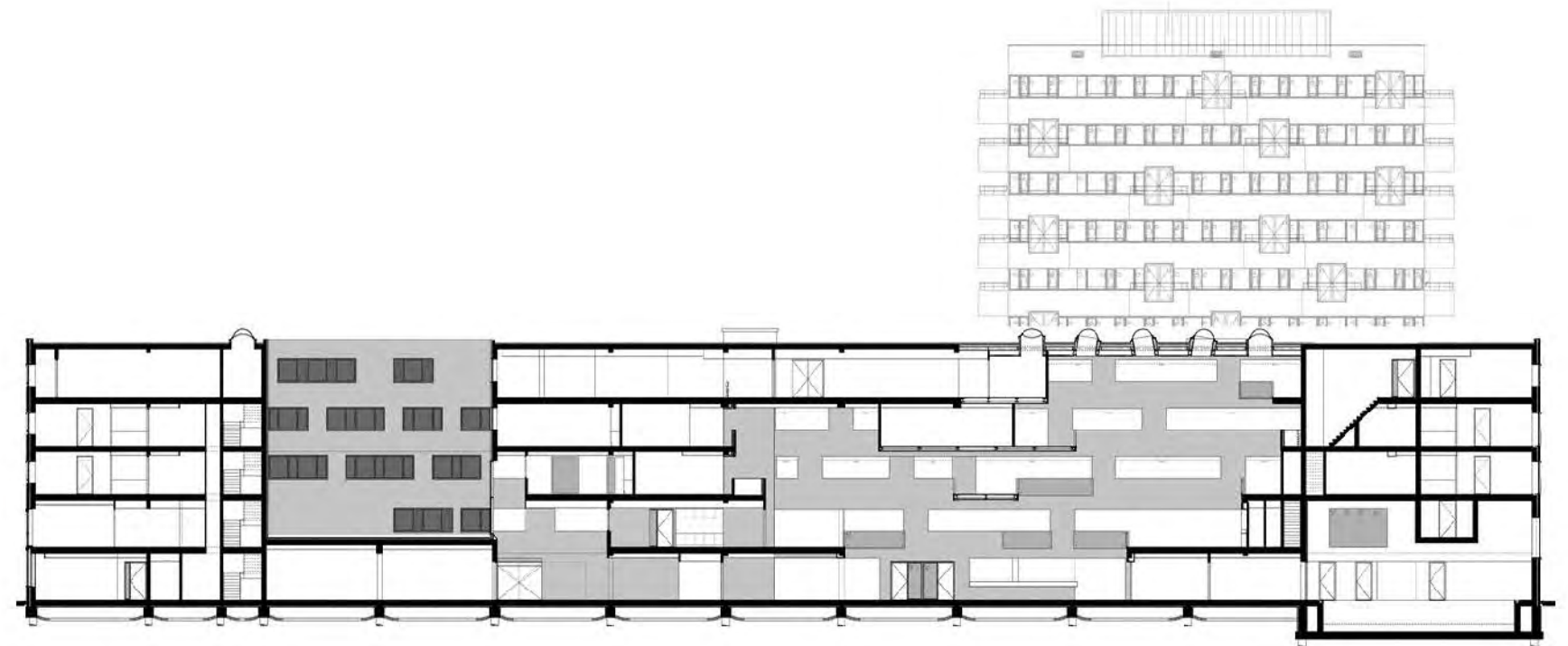
ELEVATION







ELEVATION

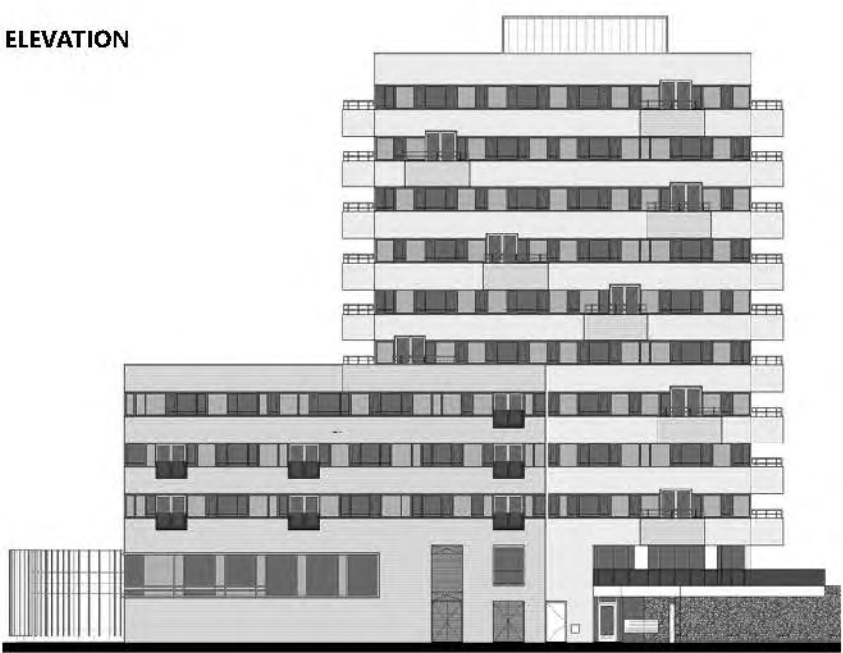


SECTION

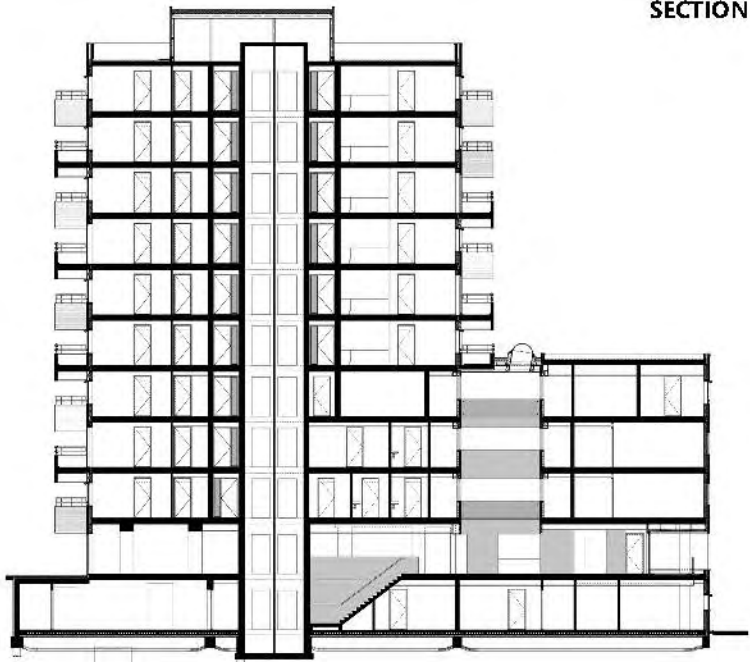




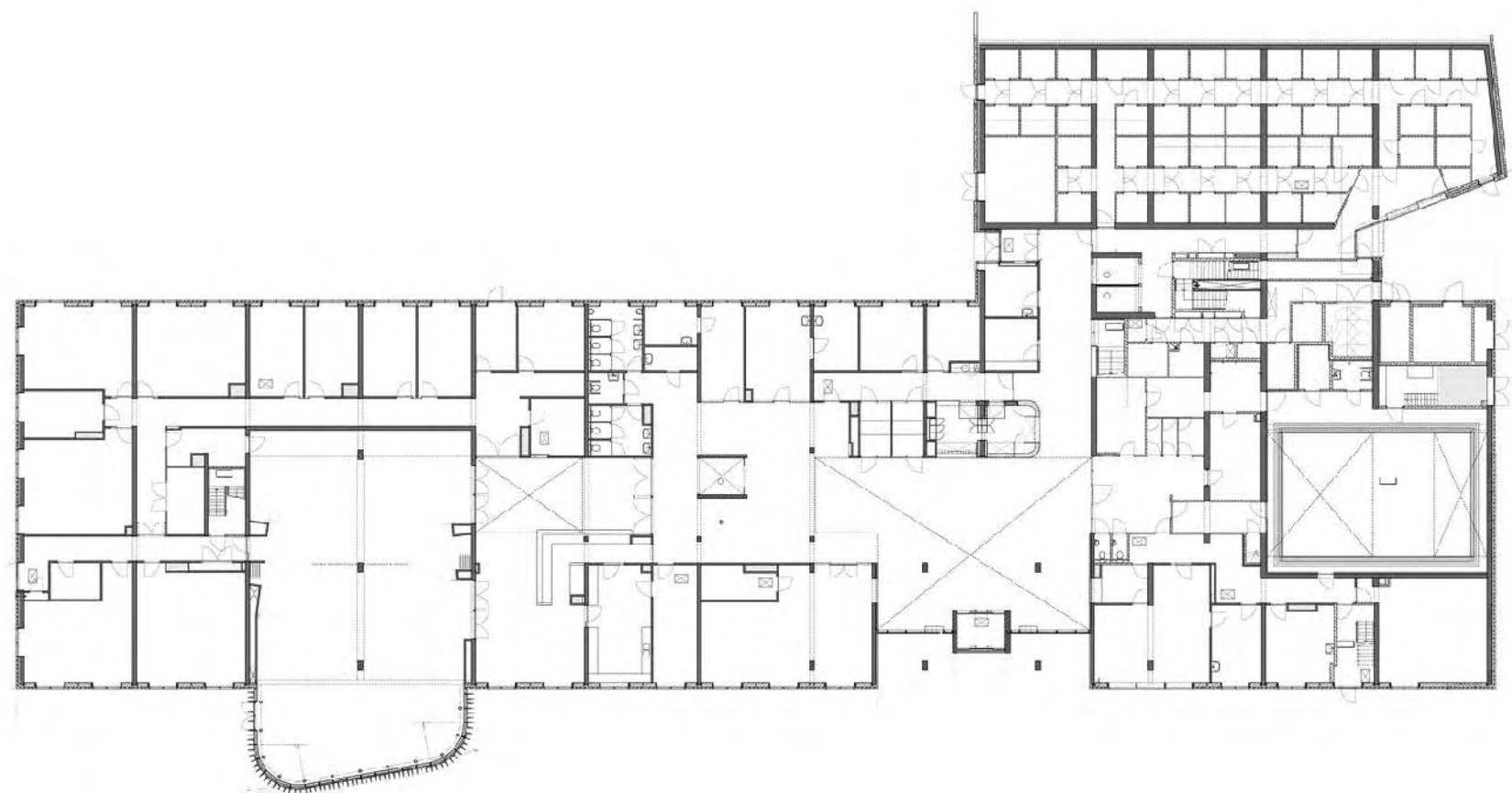
ELEVATION



SECTION















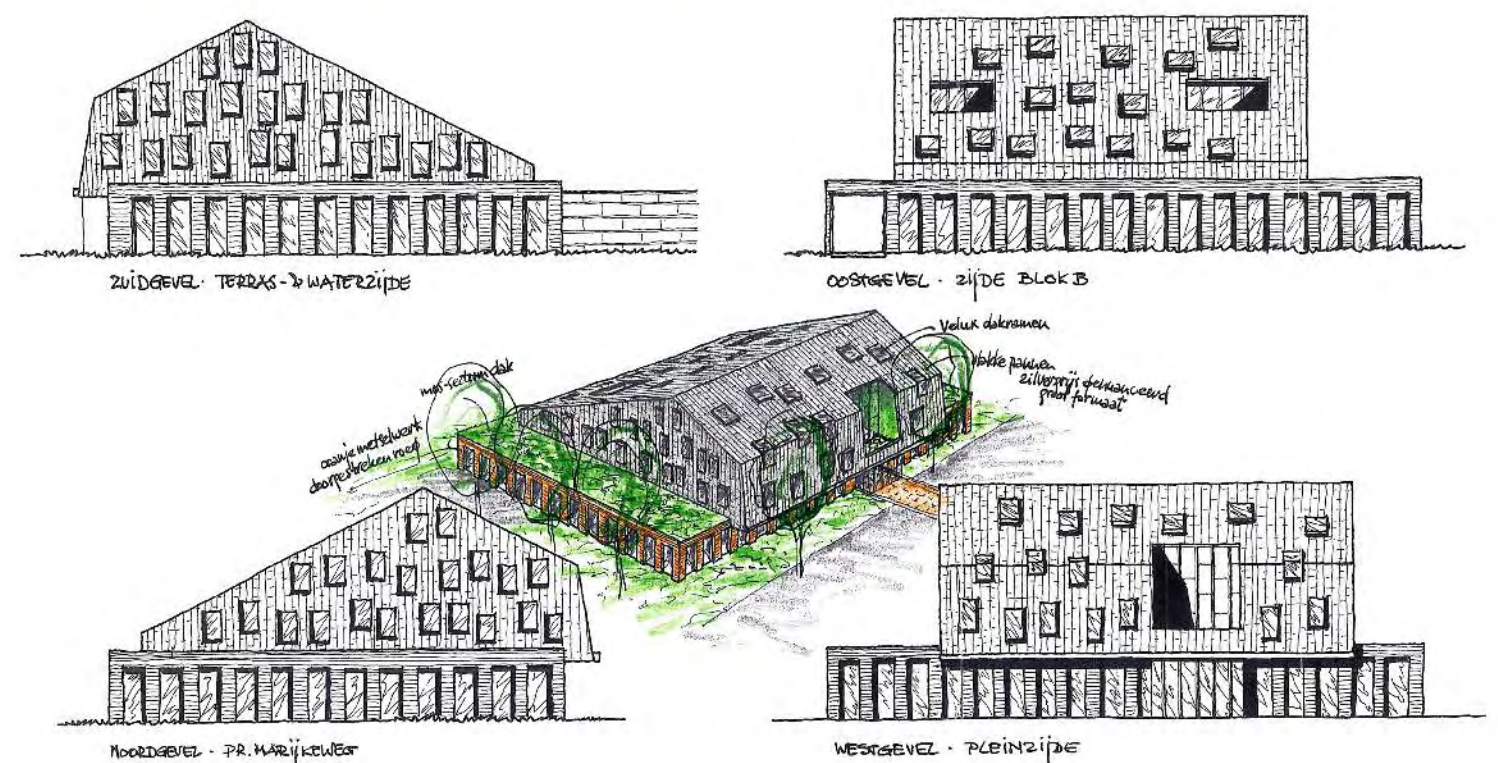
Location: AMEIDE, THE NETHERLANDS

## OPEN VENSTERS, AMEIDE

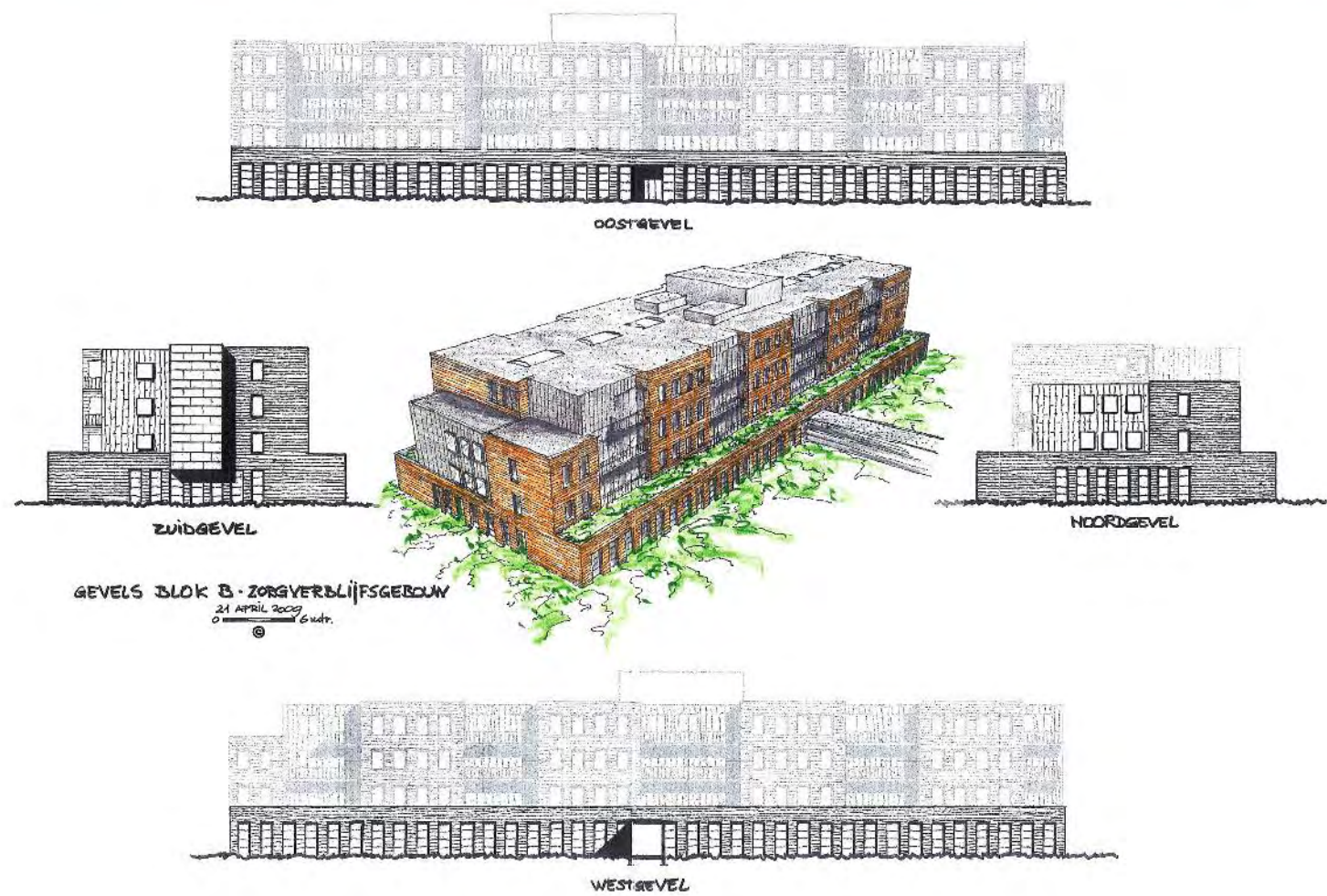
● ARCHITECT  
Dutch Health Architects  
● AREA  
7,962m<sup>2</sup>  
● PHOTOGRAPHER  
Dutch Health Architects

Open Vensters consists of private residences and a section for public facilities, connected by an indoor glass roofed street. In the residential section, where group accommodations and private care apartments are located, living is emphasized. The children's day care center and the office staff of AV Zorggroep share the facilities section. The entrance building houses the facilities section as

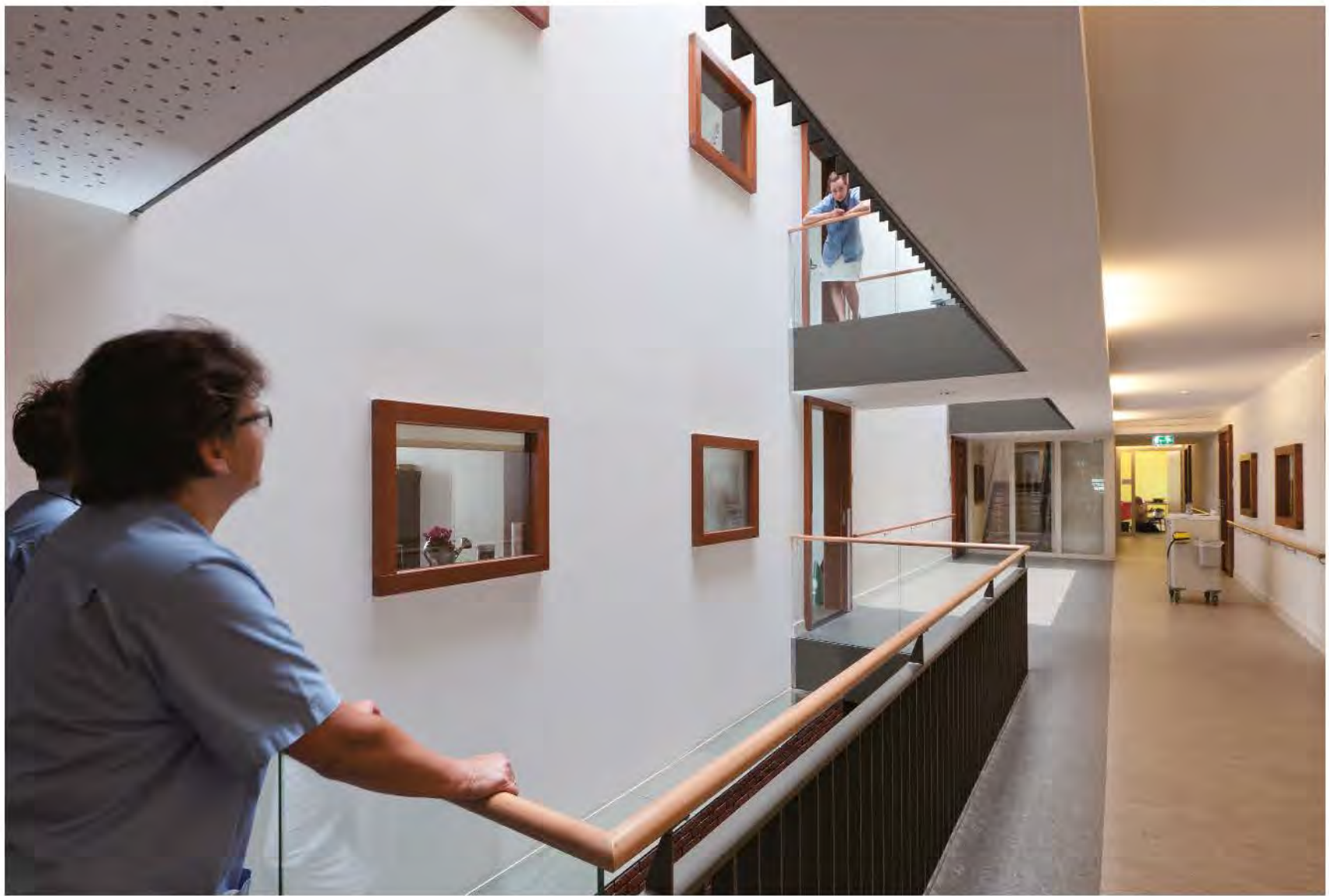
well as a restaurant and lounge. The roof of the building, consists of glazed tiles with large dormers, referring to the agricultural surroundings and provides an "open window" to the heart of the village of Ameide. With a view on the future, the psycho geriatric group accommodations consist of single rooms, some even with private bathrooms. Medium care is located in apartments which are suitable for flexible lease in the future.

















# ST. ELIZABETH ASSISTED LIVING COMPLEX

● ARCHITECT

Dutch Health Architects

● PHOTOGRAPHER

Dutch Health Architects

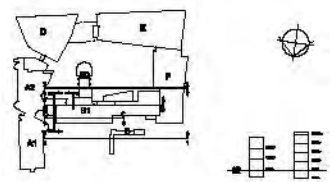
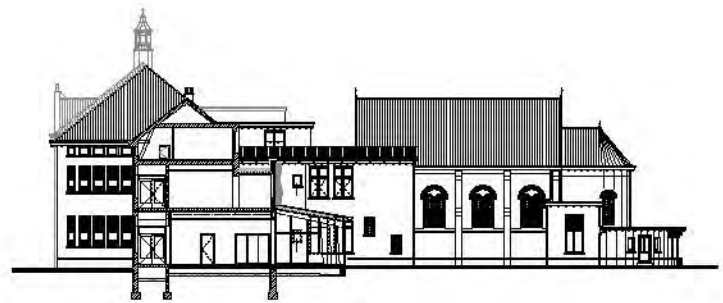
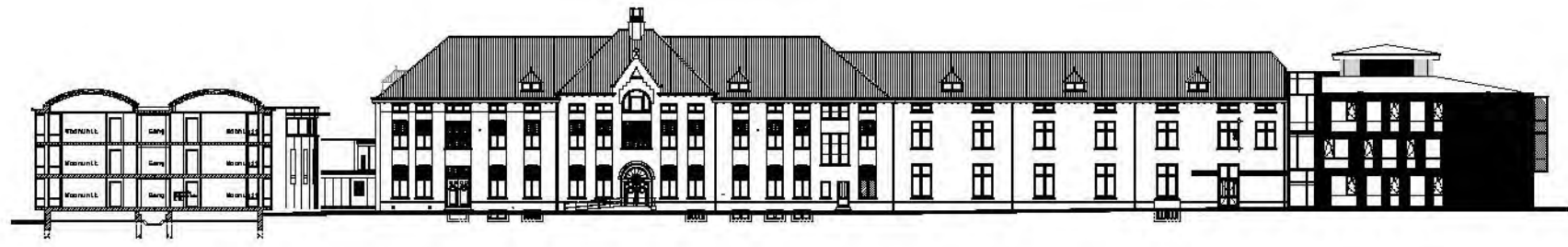
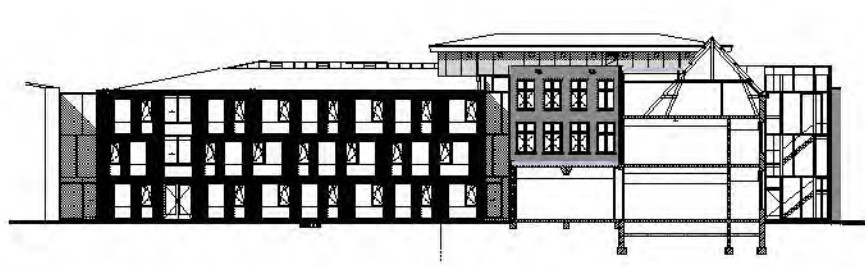
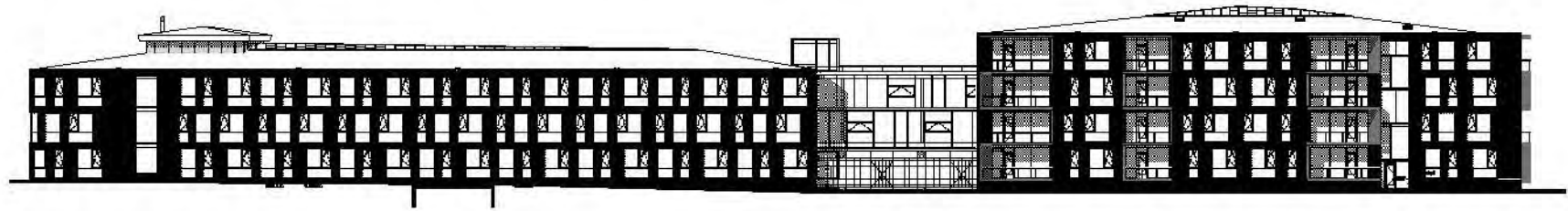
The former monastic complex of St. Elizabeth has been transformed into a modern and sustainable assisted living center. In the past, the Franciscan nuns would care for their sick and elderly sisters here. However, in 2000, the congregation voted to open the doors to non-religious tenants. This decision launched the complete renovation, partial demolition and new construction of the site. Sober and subdued, yet bright and contrasting. Although incompatible at first glimpse, these were the four principles the Dutch Health Architects set out to work on and achieve. The middle ground was partly identified in the subdued colors on the walls and ceilings, creating a striking contrast to the chosen

furniture. The subtle and distinctive materials and color choices remained respectful to the old building and added to what was already there.

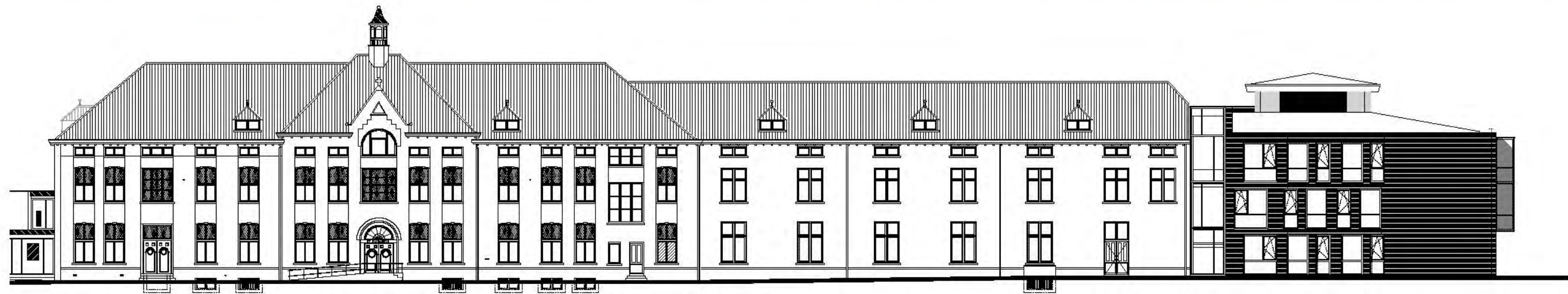
The original, stunning monastic complex was built in 1925 and still forms the heart around which the building is realized. It serves as the main link between the original complex, shared courtyard and adjacent buildings. The interaction between old and new creates a unique atmosphere within the building and encourages completely different experiences. Dutch Health Architects has completely renovated and restored this well-preserved old building, and now it is ready for at least another century of intensive use.



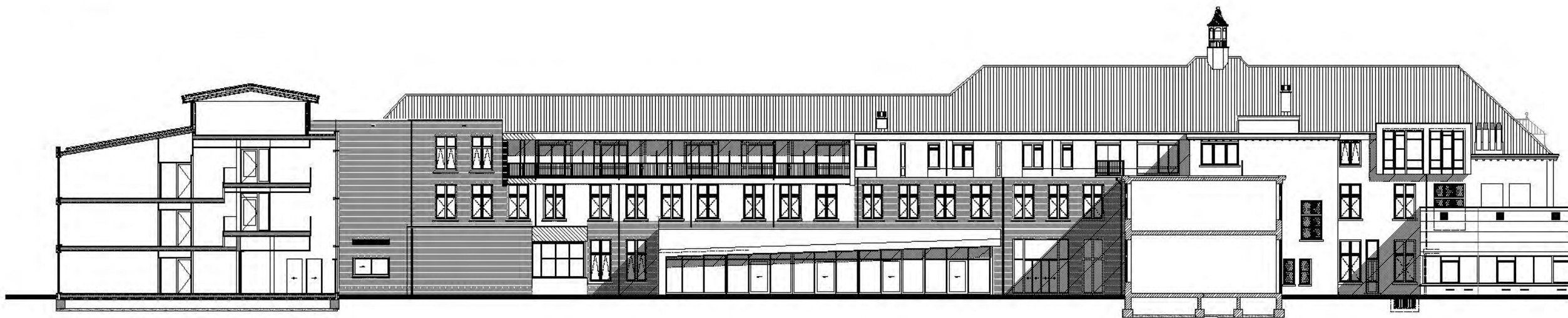
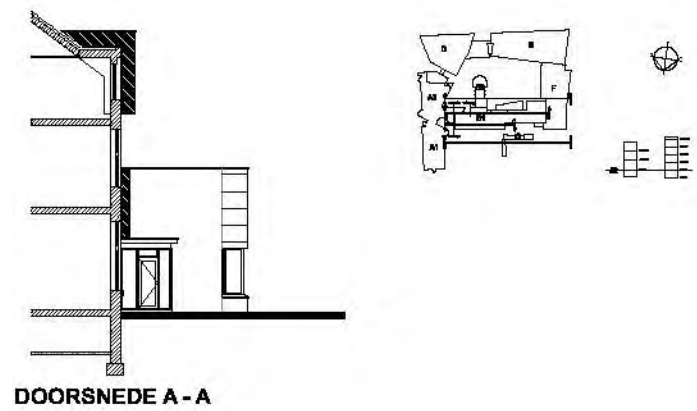




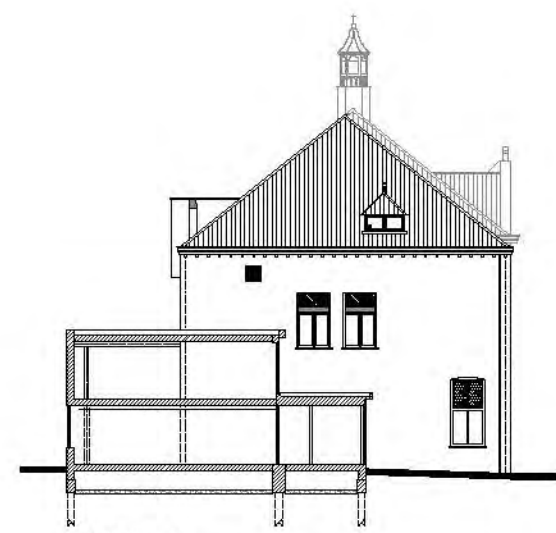




GEVEL 1

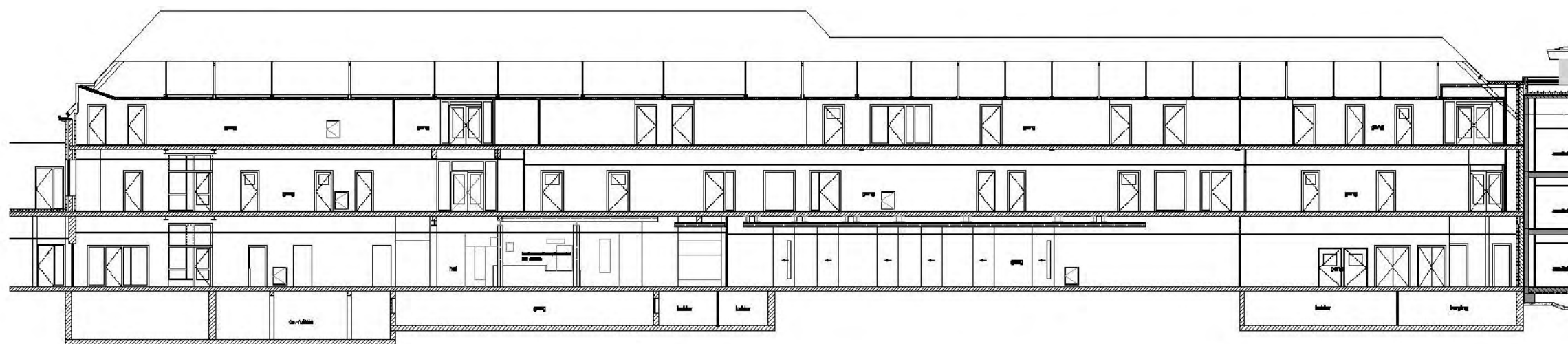
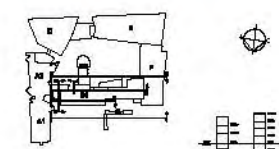


GEVEL 2

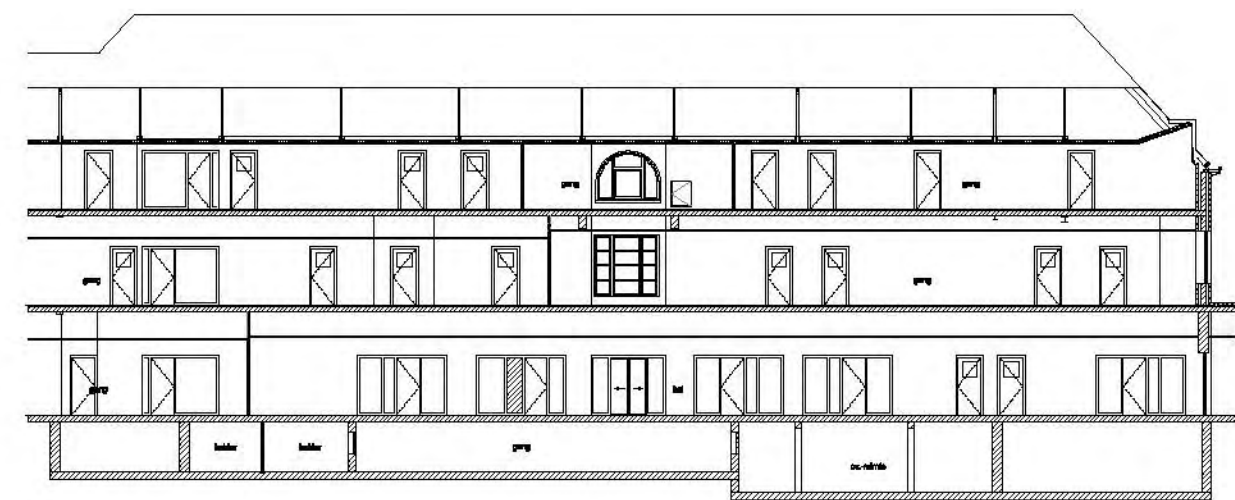


GEVEL 3



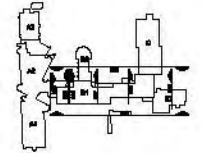
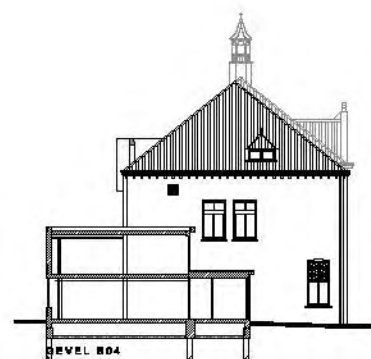
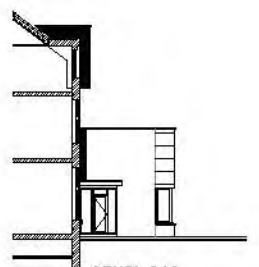
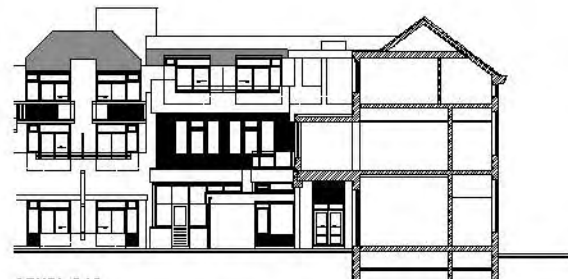
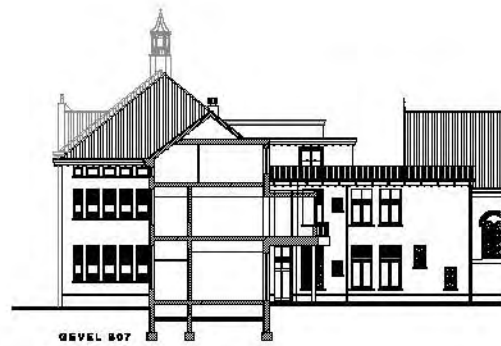
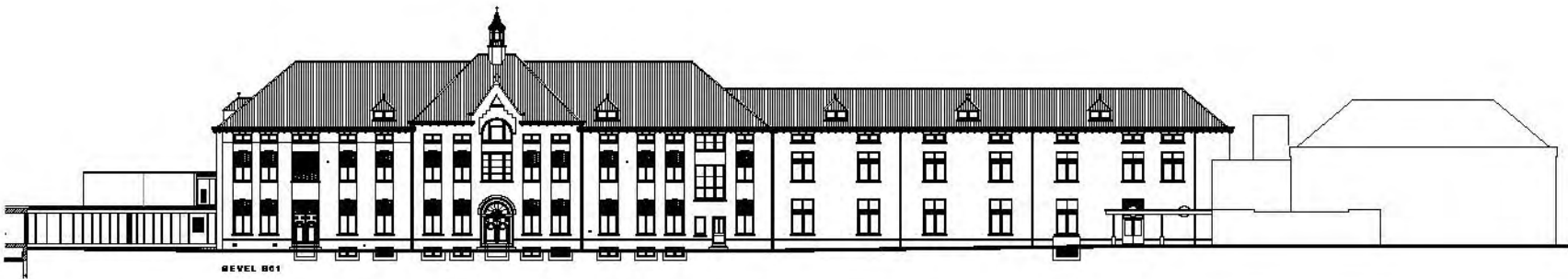


DOORSNEDE B - B

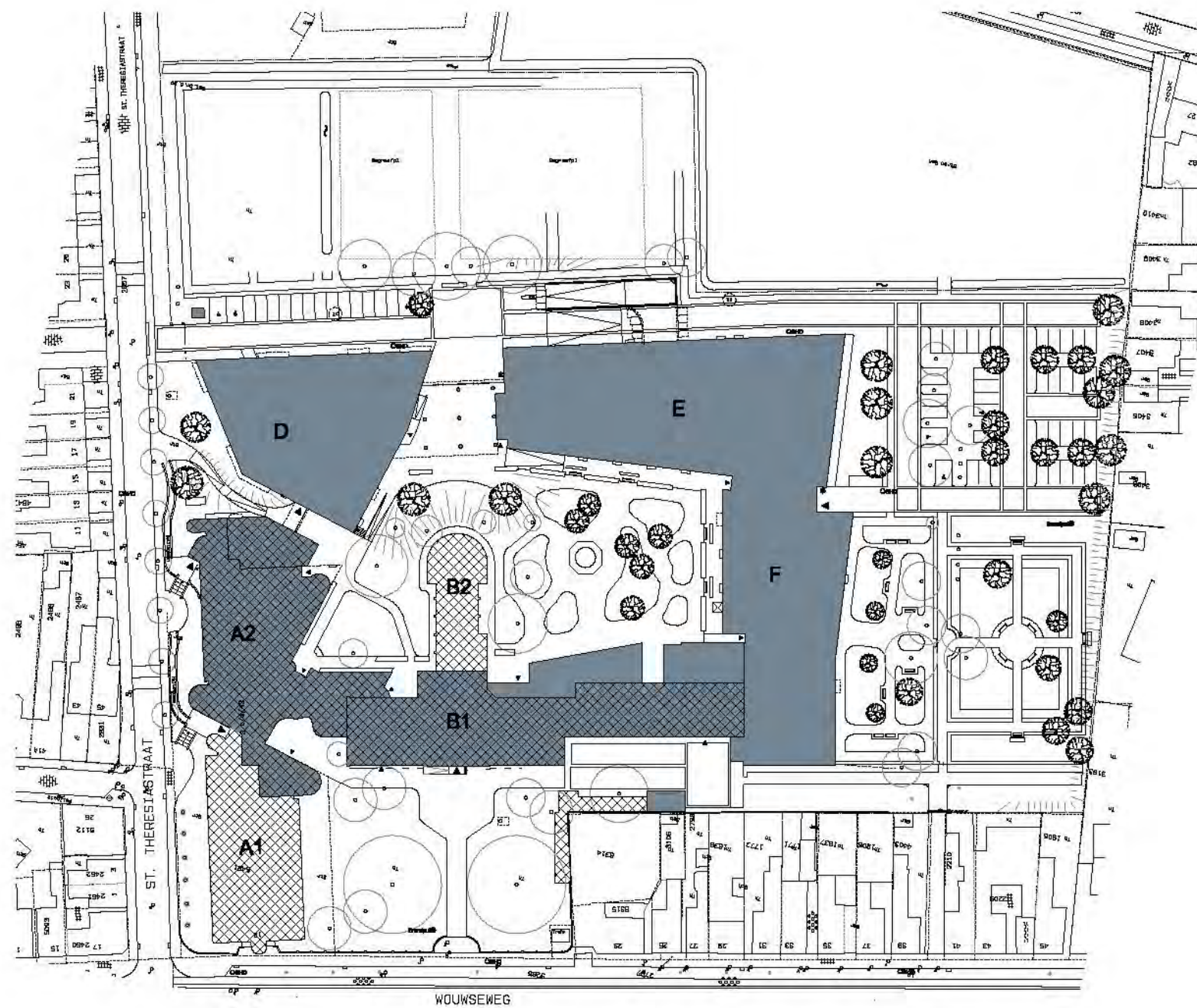


DOORSNEDE C - C














revisie:  
 kadastraal nummer: K 5481 + K 5482  
 P811- ca. 3.90+ N.A.P.  
 ontwerp tuinplan door darden

-  bebouwing bestaand
-  bebouwing bestaand, herstructuraren
-  bebouwing nieuw
-  boom, bestaand
-  boom, nieuw
-  opstelplaats brandweer

-  hoofdentree
-  entree
-  brandhydrant
-  aansluitpunt droge blusleiding
-  klinkerbestrating uitv. N.T.B.

